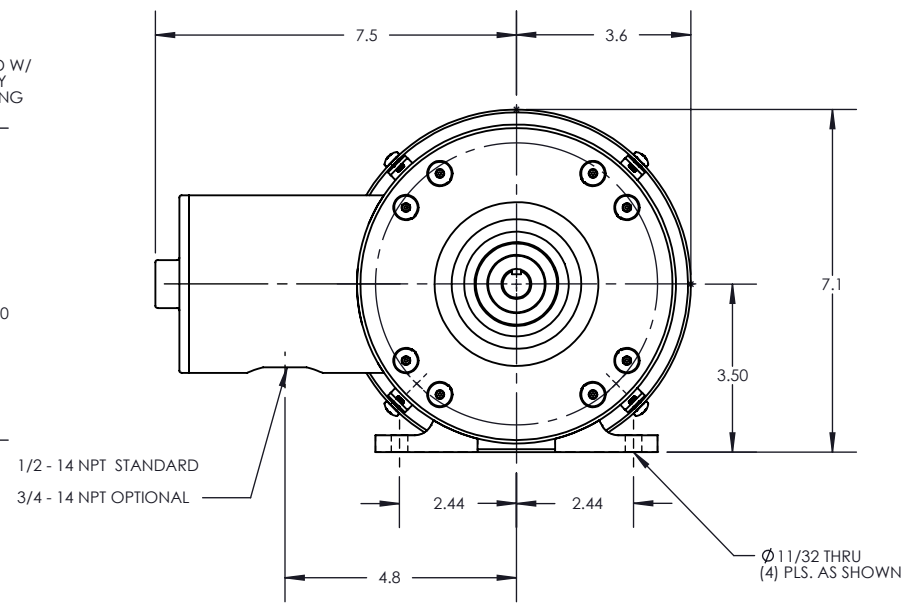
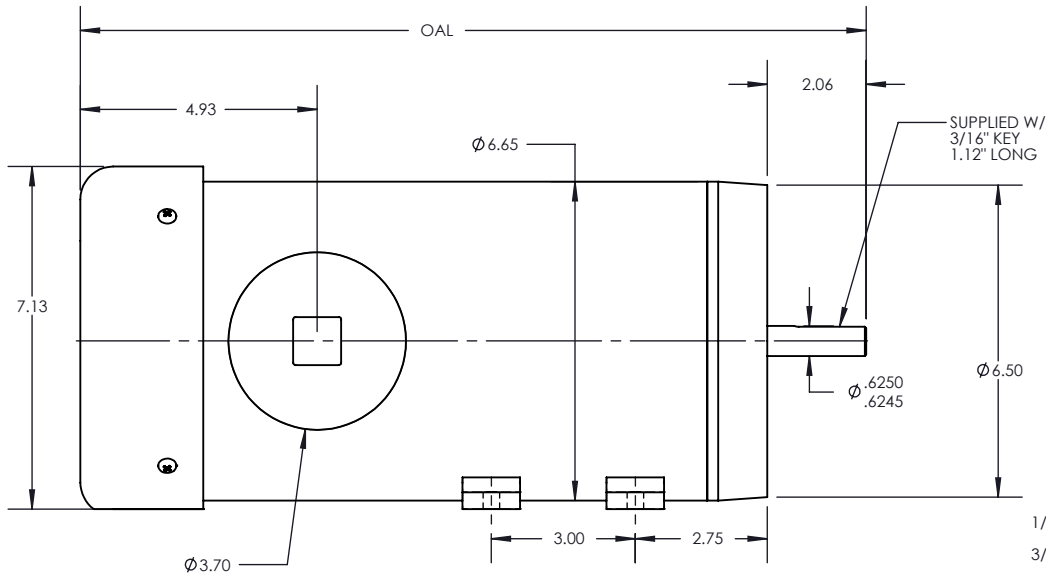


REVISIONS			
REV.	DESCRIPTION	BY	DATE



MOTOR	OAL (INCHES)
1/2 Hp 2 Pole	14.4
1/2 Hp 4 Pole	14.4
1 Hp 2 Pole	15.4
1 Hp 4 Pole	15.4
2 Hp 2 Pole	16.4
2 Hp 4 Pole	16.4
3 Hp 2 Pole	16.4

THIS DRAWING CONTAINS INFORMATION WHICH IS PROPRIETARY AND CONFIDENTIAL TO STAINLESS MOTORS, INC. AND IS TRANSMITTED IN CONFIDENCE. THE REPRODUCTION, USE OR DISCLOSURE, IN WHOLE OR IN PART, OF THE DESIGN CONTAINED HEREIN TO OTHERS IS PROHIBITED WITHOUT THE WRITTEN CONSENT OF STAINLESS MOTORS, INC.

© COPYRIGHT STAINLESS MOTORS, INC. ALL RIGHTS RESERVED. YEAR OF COPYRIGHT IS FIRST YEAR INDICATED ON THE DRAWING.

DO NOT SCALE DRAWING
UNLESS OTHERWISE SPECIFIED

DIMENSIONS ARE IN INCHES
DIMENSIONS AND SURFACE TEXTURE DESIGNATIONS APPLY PRIOR TO FINISH

DEBURR AND BREAK ALL SHARP EDGES 0.005 - 0.015

MATERIAL: T304 EXTERIOR
17-4 H1 150 SHAFT

FINISH: #4 LINE

GENERAL TOLERANCES:
.X = +/- 0.015
.XX = +/- 0.010
.XXX = +/- 0.005

FRACTIONAL = +/- 1/64
ANGULAR = +/- 1/2°

REFERENCE DRAWING:
DRAWING F:\Website\IMOTOR DRAWINGS\XP\56\XPXC01TXXB1 NUMBER:

STAINLESS MOTORS INC.

DRAWN: BDJ
CHECK:
ENG: JO
DATE: 6/9/2015

56 FRAME,
C-FACE MOUNT
TEFC, THRU FOOT
XP

NOTES: