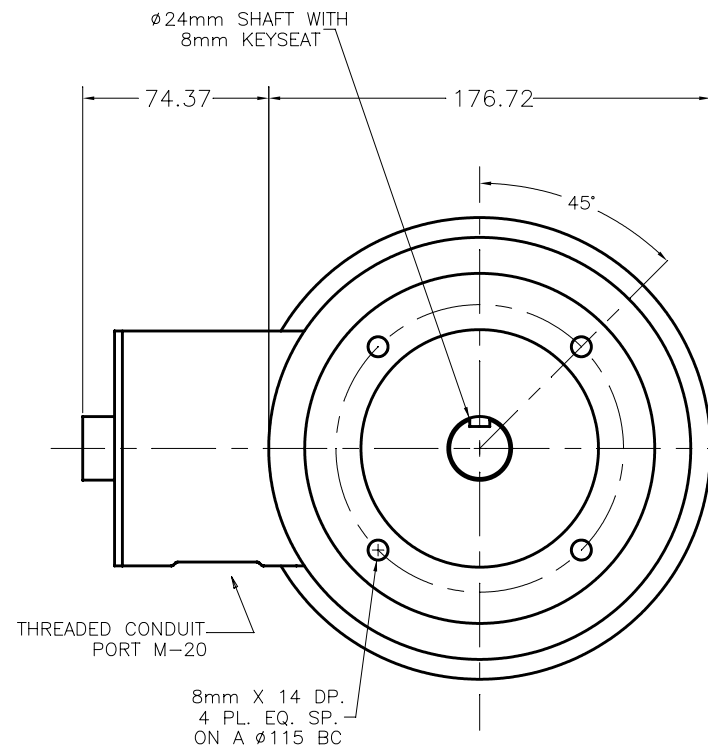
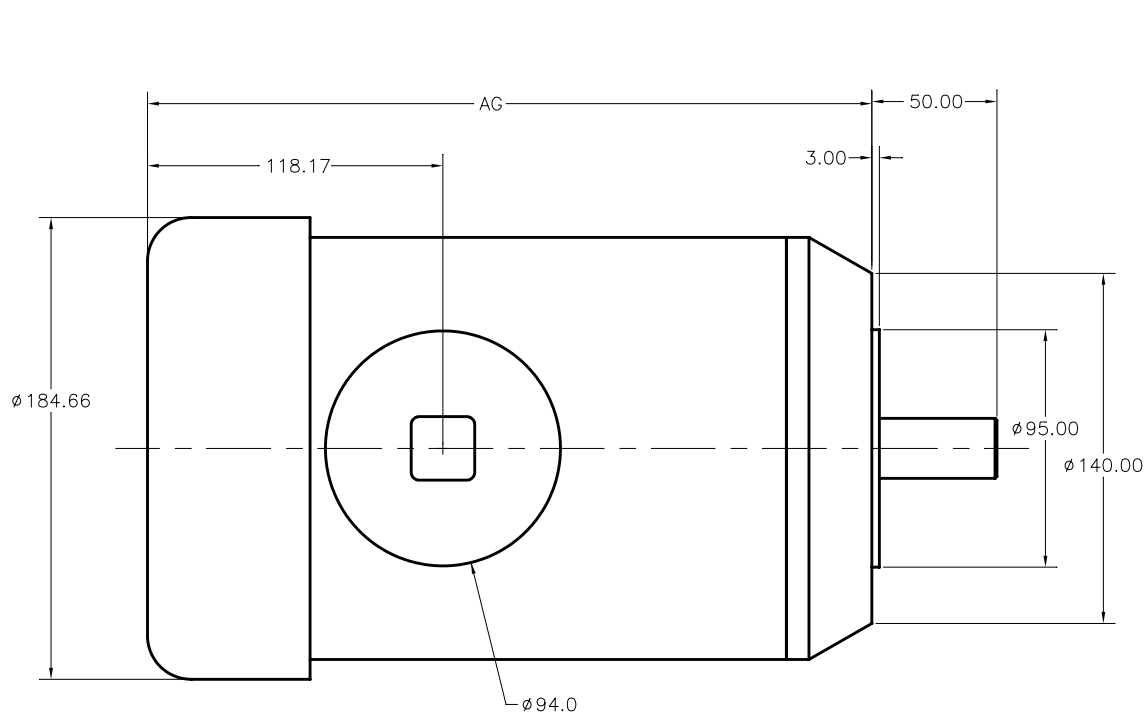


AG				
	2 POLE	4 POLE	6 POLE	8 POLE
0.37 KW	264.33	289.73	302.43	327.83
0.75 KW	302.43	302.43	327.83	/
1.1 KW	315.13	315.13	/	/
1.5 KW	315.13	327.83	/	/
2.2 KW	327.83	/	/	/

REVISIONS			
REV	DESCRIPTION	BY	DATE
A	M20 THREAD WAS PG16	SKT	04/29/05
B	REVISED AG DIMENSIONS BASED ON ACTUAL CASE LENGTHS	SKT	06/09/05



1. ALLOW 1" CLEARANCE BEYOND FAN SHROUD FOR AIR FLOW

NOTES:

DO NOT SCALE DRAWING	MATERIAL:	STAINLESS MOTORS INC.	
UNLESS OTHERWISE SPECIFIED	FINISH:		
DIMENSIONS ARE IN INCHES		DRAWN MFG	IEC 90-B14 TEFC
DIMENSIONS AND SURFACE TEXTURE DESIGNATIONS APPLY PRIOR TO FINISH		CHECK	
DEBURR AND BREAK ALL SHARP EDGES .005-.015		ENG. JO	
		DATE 03/25/05	
	REFERENCE DRAWING:		
	DRWG. NO. F:\DRAFTING\MOTORS\DIMENSIONAL DWGS\PHARM MOTORS\IEC\90 FRAME\B14\90-B14-TEFC		