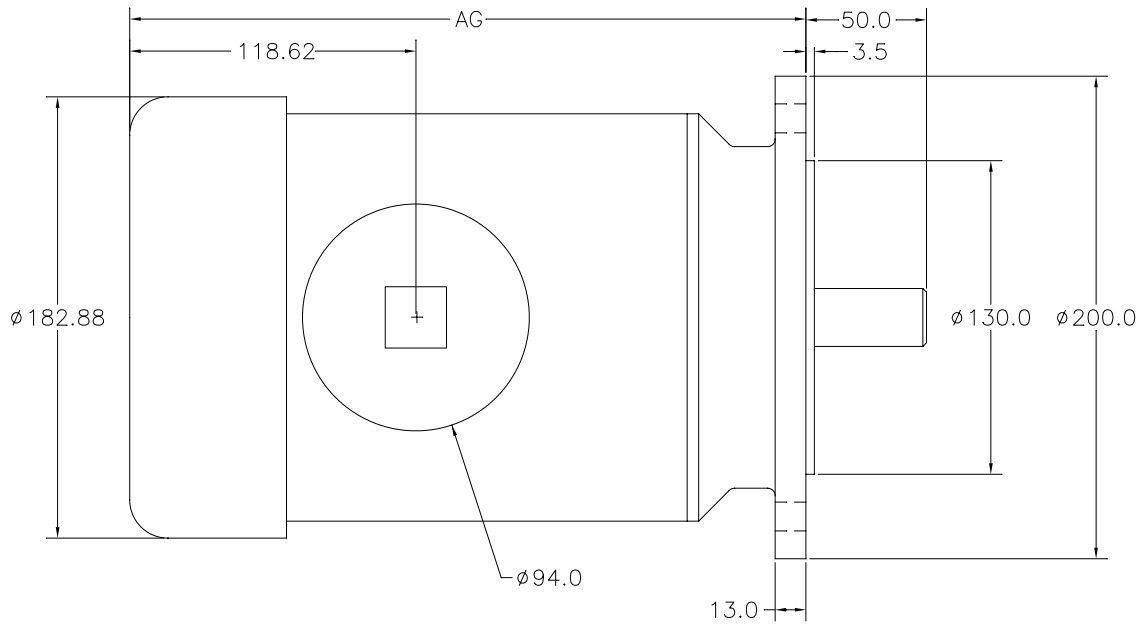


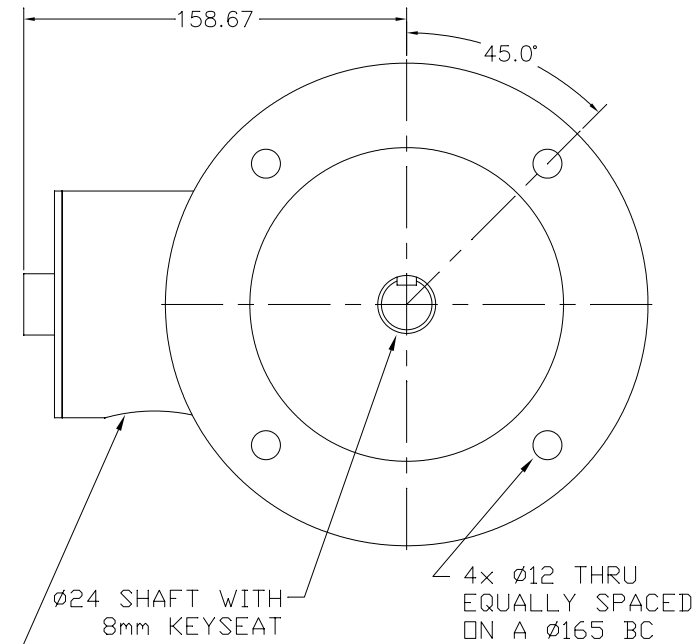
AG DIM.

	2 POLE	4 POLE	6 POLE	8 POLE
0.37 kW	280.24	305.64	318.34	343.74
0.75 kW	318.34	318.34	343.74	
1.1 kW	331.04	331.04		
1.5 kW	331.04	343.74		
2.2 kW	343.74			

REVISIONS			
REV	DESCRIPTION	BY	DATE



THREADED CONDUIT PORT M20



1. ALLOW 1" CLEARANCE BEYOND FAN SHROUD FOR AIR FLOW

NOTES:

DO NOT SCALE DRAWING		<b>STAINLESS MOTORS INC.</b>	
UNLESS OTHERWISE SPECIFIED: DIMENSIONS ARE IN METRIC DIMENSIONS AND SURFACE TEXTURE DESIGNATIONS APPLY PRIOR TO FINISH			
GENERAL TOLERANCES:		DRAWN MFG	90-B5 TEFC
.X = ±.015		CHECK	
.XX = ±.010 FRACTIONAL = ±1/64		ENG. JO	
.XXX = ±.005 ANGULAR = ±1/2°		DATE 03/25/05	
		DRWG. NO.	MOTORS/IEC/90-B5-TEFC