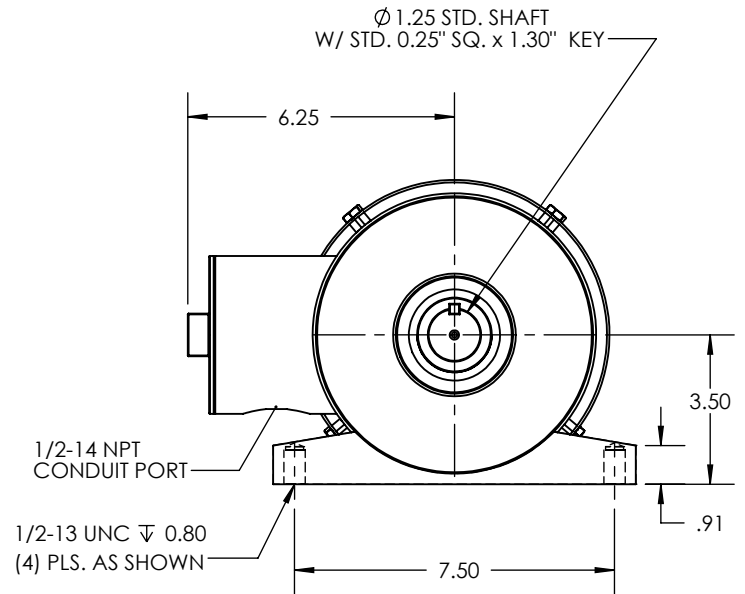
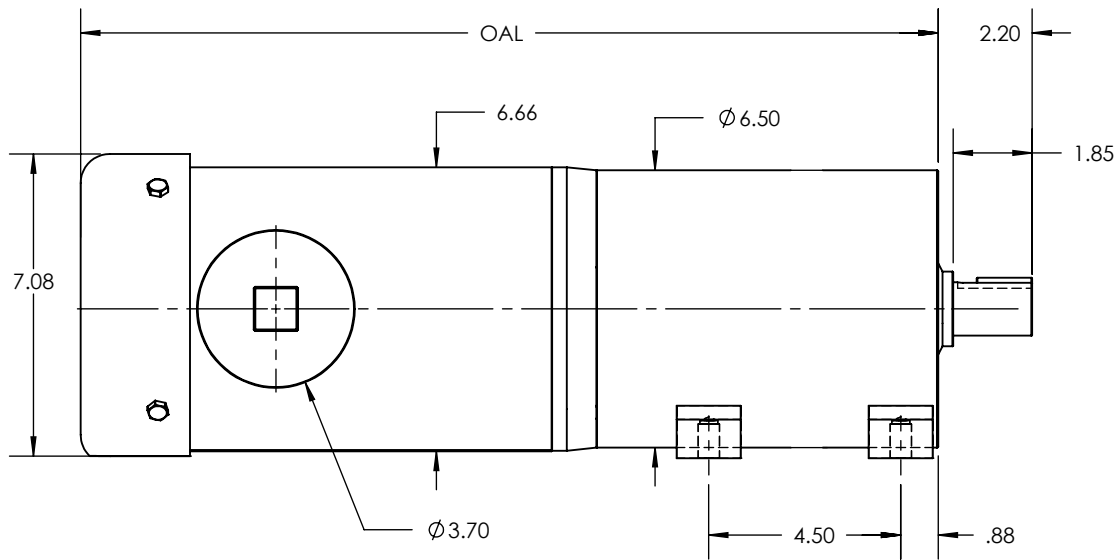


OAL DIMENSION						
RATIO	OUTPUT RPM	0.25-0.5 HP	0.75 HP	1 HP	1.5 HP	2 HP
3	580	17.11"	18.11"	18.61"	19.61"	19.61"
3.67	474					
4.2	414					
5	348					
9	193	18.10"	19.10"	19.60"	20.60"	20.60"
12.6	138					
15	116					
17.6	98					
21	82					
25	69					

REVISIONS			
REV.	DESCRIPTION	BY	DATE



1. OTHER SHAFT SIZES AVAILABLE
2. GREASE OR OIL LUBRICATION AVAILABLE
3. OTHER RATIOS AVAILABLE UPON REQUEST

THIS DRAWING CONTAINS INFORMATION WHICH IS PROPRIETARY AND CONFIDENTIAL TO STAINLESS MOTORS, INC. AND IS TRANSMITTED IN CONFIDENCE. THE REPRODUCTION, USE OR DISCLOSURE, IN WHOLE OR IN PART, OF THE DESIGN CONTAINED HEREIN TO OTHERS IS PROHIBITED WITHOUT THE WRITTEN CONSENT OF STAINLESS MOTORS, INC.

© COPYRIGHT STAINLESS MOTORS, INC. ALL RIGHTS RESERVED. YEAR OF COPYRIGHT IS FIRST YEAR INDICATED ON THE DRAWING.

DO NOT SCALE DRAWING

UNLESS OTHERWISE SPECIFIED

DIMENSIONS ARE IN INCHES
DIMENSIONS AND SURFACE
TEXTURE DESIGNATIONS
APPLY PRIOR TO FINISH

DEBURR AND BREAK ALL
SHARP EDGES 0.005 - 0.015

MATERIAL: T304 EXTERIOR
17-4 H1150 SHAFT

FINISH:
#4 LINE

GENERAL TOLERANCES:

.X = +/- 0.015
.XX = +/- 0.010
.XXX = +/- 0.005

FRACTIONAL = +/- 1/64
ANGULAR = +/- 1/2°

REFERENCE
DRAWING:

DRAWING F:\Website\GEARBOXES\IL\IL650XXBAXXXX-56
NUMBER:

**STAINLESS
MOTORS INC.**

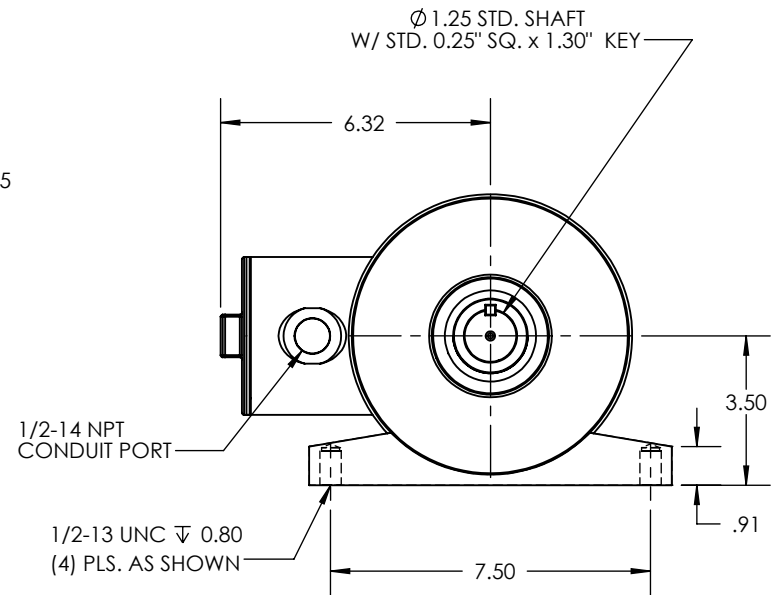
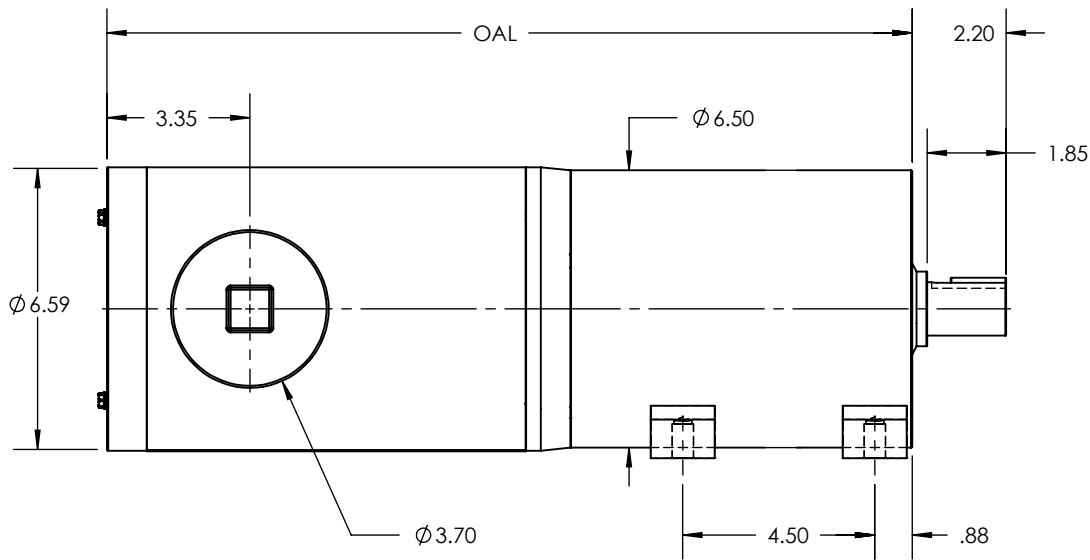
DRAWN: WJK
CHECK:
ENG: JO
DATE: 1/28/2019

IL650 FRAME
FOOT MOUNT
TEFC, BLIND FOOT
SANIFAN

NOTES:

OAL DIMENSION						
RATIO	OUTPUT RPM	0.25-0.5 HP	0.75 HP	1 HP	1.5 HP	2 HP
3	580	16.39	17.39	17.89	18.89	18.89
3.67	474					
4.2	414					
5	348					
9	193	17.38	18.38	18.88	19.88	19.88
12.6	138					
15	116					
17.6	98					
21	82					
25	69					

REVISIONS			
REV.	DESCRIPTION	BY	DATE



- OTHER SHAFT SIZES AVAILABLE
- GREASE OR OIL LUBRICATION AVAILABLE
- OTHER RATIOS AVAILABLE UPON REQUEST

THIS DRAWING CONTAINS INFORMATION WHICH IS PROPRIETARY AND CONFIDENTIAL TO STAINLESS MOTORS, INC. AND IS TRANSMITTED IN CONFIDENCE. THE REPRODUCTION, USE OR DISCLOSURE, IN WHOLE OR IN PART, OF THE DESIGN CONTAINED HEREIN TO OTHERS IS PROHIBITED WITHOUT THE WRITTEN CONSENT OF STAINLESS MOTORS, INC.

© COPYRIGHT STAINLESS MOTORS, INC. ALL RIGHTS RESERVED. YEAR OF COPYRIGHT IS FIRST YEAR INDICATED ON THE DRAWING.

DO NOT SCALE DRAWING

UNLESS OTHERWISE SPECIFIED

DIMENSIONS ARE IN INCHES
DIMENSIONS AND SURFACE TEXTURE DESIGNATIONS APPLY PRIOR TO FINISH

DEBURR AND BREAK ALL SHARP EDGES 0.005 - 0.015

MATERIAL: T304 EXTERIOR
17-4 H1150 SHAFT

FINISH:
#4 LINE

GENERAL TOLERANCES:

.X = +/- 0.015
.XX = +/- 0.010
.XXX = +/- 0.005

FRACTIONAL = +/- 1/64
ANGULAR = +/- 1/2°

**STAINLESS
MOTORS INC.**

DRAWN: WJK

CHECK:

ENG: JO

DATE: 1/28/2019

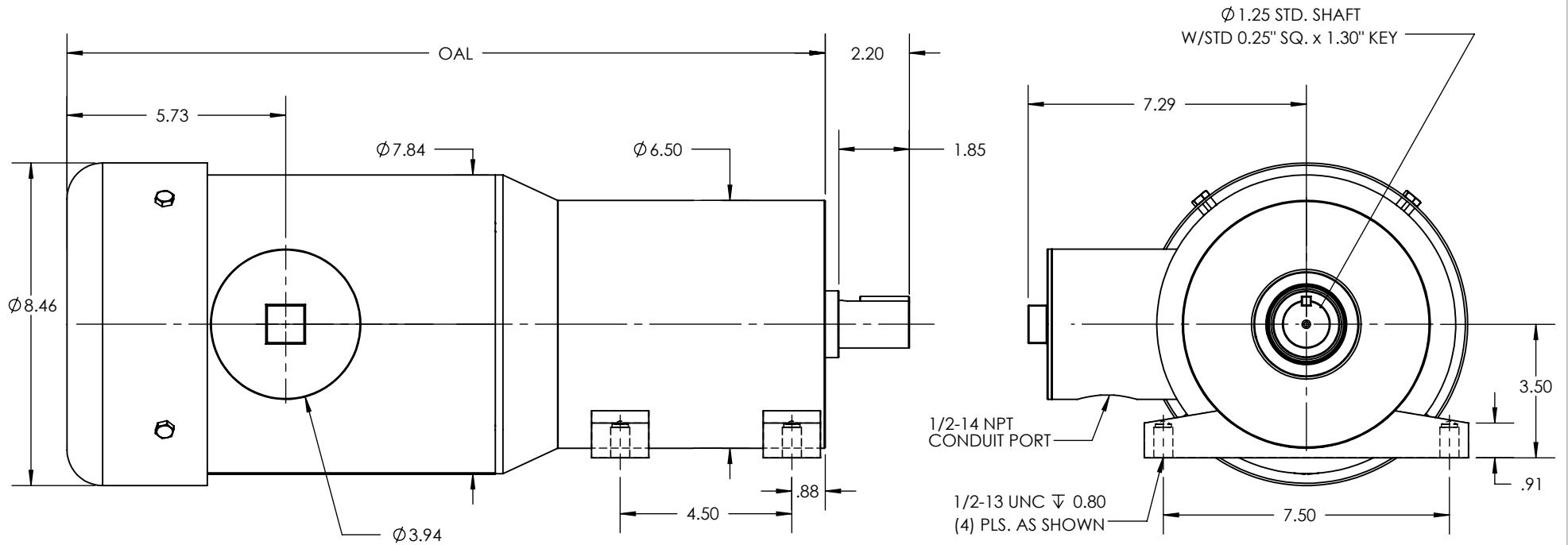
IL650 FRAME
FOOT MOUNT
TENV, BLIND FOOT
SANIFAN

REFERENCE DRAWING:
DRAWING F:\Website\GEARBOXES\IL\IL650XXBAXXXX-56-TENV NUMBER:

NOTES:

OAL DIMENSION		
RATIO	OUTPUT RPM	3 HP
3	580	19.88"
3.67	474	
4.2	414	
5	348	
9	193	20.87"

REVISIONS			
REV.	DESCRIPTION	BY	DATE



1. OTHER SHAFT SIZES AVAILABLE
2. GREASE OR OIL LUBRICATION AVAILABLE
3. OTHER RATIOS AVAILABLE UPON REQUEST

THIS DRAWING CONTAINS INFORMATION WHICH IS PROPRIETARY AND CONFIDENTIAL TO STAINLESS MOTORS, INC., AND IS TRANSMITTED IN CONFIDENCE. THE REPRODUCTION, USE OR DISCLOSURE, IN WHOLE OR IN PART, OF THE DESIGN CONTAINED HEREIN TO OTHERS IS PROHIBITED WITHOUT THE WRITTEN CONSENT OF STAINLESS MOTORS, INC.

© COPYRIGHT STAINLESS MOTORS, INC. ALL RIGHTS RESERVED. YEAR OF COPYRIGHT IS FIRST YEAR INDICATED ON THE DRAWING.

DO NOT SCALE DRAWING

UNLESS OTHERWISE SPECIFIED

DIMENSIONS ARE IN INCHES
DIMENSIONS AND SURFACE TEXTURE DESIGNATIONS APPLY PRIOR TO FINISH

ALL OUTSIDE RADII TO BE .025/.035
ALL INSIDE RADII TO BE .032.

MATERIAL: T304 EXTERIOR
17-4 H1150 SHAFT

FINISH: #4 LINE

GENERAL TOLERANCES:

.X = +/-0.015
.XX = +/-0.010
.XXX = +/-0.005

FRACTIONAL = +/- 1/64
ANGULAR = +/- 1/2°

STAINLESS MOTORS INC.

DRAWN: WJK
CHECK: JO
ENG: JO
DATE: 1/28/2019

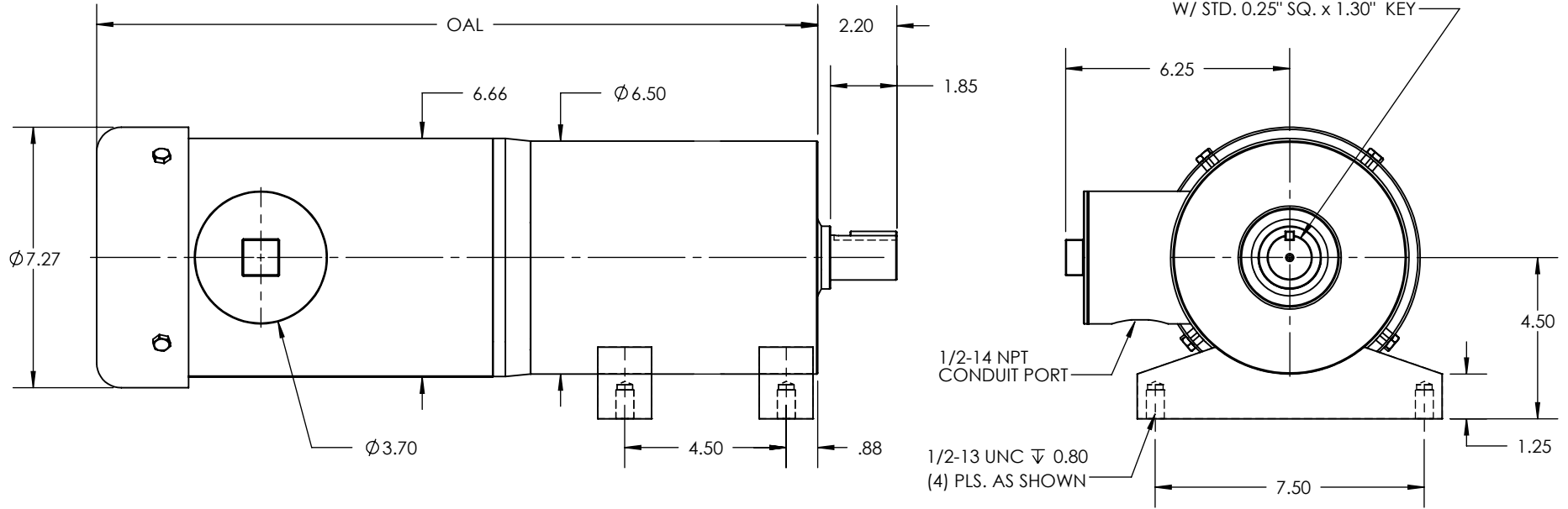
IL650 FRAME
FOOT MOUNT
TEFC, BLIND FOOT
SANIFAN

NOTES:

REFERENCE DRAWING:
NUMBER: F:\Website\GEARBOXES\IL650XXXBAXXXX-180

OAL DIMENSION						
RATIO	OUTPUT RPM	0.25-0.5 HP	0.75 HP	1 HP	1.5 HP	2 HP
3	580	17.11"	18.11"	18.61"	19.61"	19.61"
3.67	474					
4.2	414					
5	348					
9	193	18.10"	19.10"	19.60"	20.60"	20.60"
12.6	138					
15	116					
17.6	98				---	---
21	82				---	---
25	69				---	---

REVISIONS			
REV.	DESCRIPTION	BY	DATE



1. OTHER SHAFT SIZES AVAILABLE
2. GREASE OR OIL LUBRICATION AVAILABLE
3. OTHER RATIOS AVAILABLE UPON REQUEST

THIS DRAWING CONTAINS INFORMATION WHICH IS PROPRIETARY AND CONFIDENTIAL TO STAINLESS MOTORS, INC., AND IS TRANSMITTED IN CONFIDENCE. THE REPRODUCTION, USE OR DISCLOSURE, IN WHOLE OR IN PART, OF THE DESIGN CONTAINED HEREIN TO OTHERS IS PROHIBITED WITHOUT THE WRITTEN CONSENT OF STAINLESS MOTORS, INC.

© COPYRIGHT STAINLESS MOTORS, INC. ALL RIGHTS RESERVED. YEAR OF COPYRIGHT IS FIRST YEAR INDICATED ON THE DRAWING.

DO NOT SCALE DRAWING

UNLESS OTHERWISE SPECIFIED

DIMENSIONS ARE IN INCHES
DIMENSIONS AND SURFACE TEXTURE DESIGNATIONS APPLY PRIOR TO FINISH

DEBURR AND BREAK ALL SHARP EDGES 0.005 - 0.015

MATERIAL: T304 EXTERIOR 17-4 H1150 SHAFT

FINISH: #4 LINE

GENERAL TOLERANCES:

.X = +/- 0.015
.XX = +/- 0.010
.XXX = +/- 0.005

FRACTIONAL = +/- 1/64
ANGULAR = +/- 1/2°

REFERENCE DRAWING:
DRAWING F:\Website\GEARBOXES\IL\IL650XXXBBXXXX-56 NUMBER:

STAINLESS MOTORS INC.

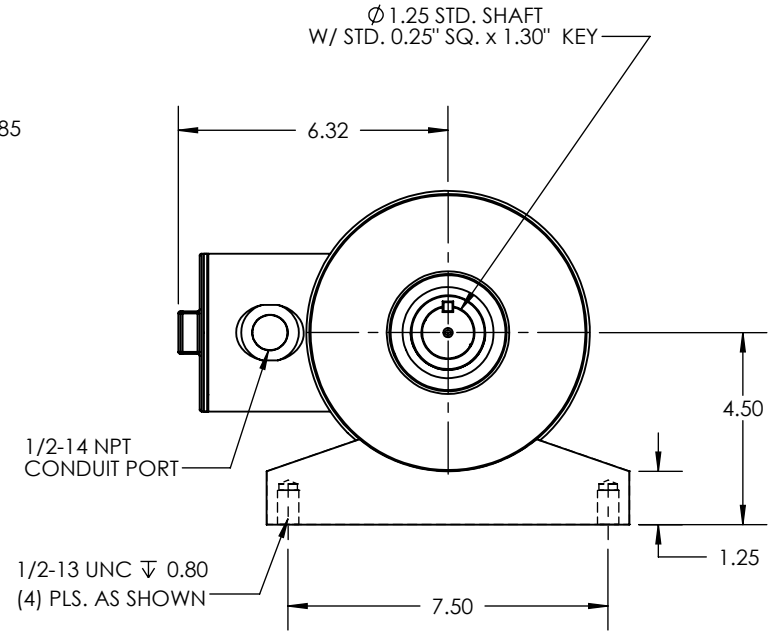
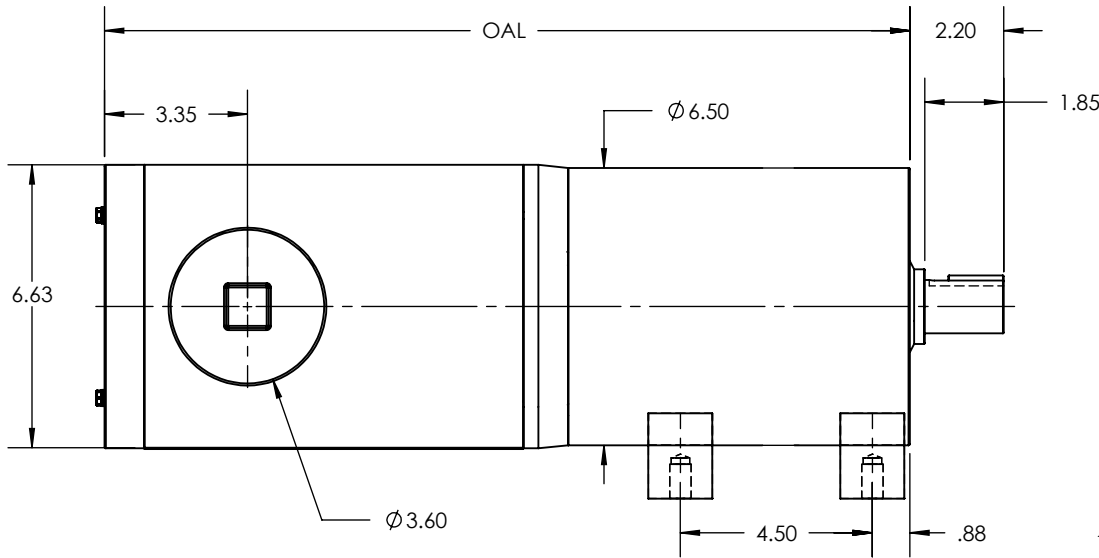
DRAWN: WJK
CHECK:
ENG: JO
DATE: 1/28/2019

IL650 FRAME
FOOT MOUNT
TEFC, BLIND FOOT
SANIFAN

NOTES:

OAL DIMENSION						
RATIO	OUTPUT RPM	0.25-0.5 HP	0.75 HP	1 HP	1.5 HP	2 HP
3	580	16.39"	17.39"	17.89"	18.89"	18.89"
3.67	474					
4.2	414					
5	348					
9	193	17.38"	18.38"	18.88"	19.88"	19.88"
12.6	138					
15	116					
17.6	98					
21	82					
25	69					

REVISIONS			
REV.	DESCRIPTION	BY	DATE



1. OTHER SHAFT SIZES AVAILABLE
2. GREASE OR OIL LUBRICATION AVAILABLE
3. OTHER RATIOS AVAILABLE UPON REQUEST

THIS DRAWING CONTAINS INFORMATION WHICH IS PROPRIETARY AND CONFIDENTIAL TO STAINLESS MOTORS, INC., AND IS TRANSMITTED IN CONFIDENCE. THE REPRODUCTION, USE OR DISCLOSURE, IN WHOLE OR IN PART, OF THE DESIGN CONTAINED HEREIN TO OTHERS IS PROHIBITED WITHOUT THE WRITTEN CONSENT OF STAINLESS MOTORS, INC.

© COPYRIGHT STAINLESS MOTORS, INC. ALL RIGHTS RESERVED. YEAR OF COPYRIGHT IS FIRST YEAR INDICATED ON THE DRAWING.

DO NOT SCALE DRAWING

UNLESS OTHERWISE SPECIFIED

DIMENSIONS ARE IN INCHES
DIMENSIONS AND SURFACE TEXTURE DESIGNATIONS APPLY PRIOR TO FINISH

DEBURR AND BREAK ALL SHARP EDGES 0.005 - 0.015

MATERIAL: T304 EXTERIOR 17-4 H1150 SHAFT

FINISH: #4 LINE

GENERAL TOLERANCES:

.X = +/- 0.015
.XX = +/- 0.010
.XXX = +/- 0.005

FRACTIONAL = +/- 1/64
ANGULAR = +/- 1/2°

REFERENCE DRAWING:
DRAWING F:\Website\GEARBOXES\IL\IL650XXXBBXXXX-56-TENV NUMBER:

STAINLESS MOTORS INC.

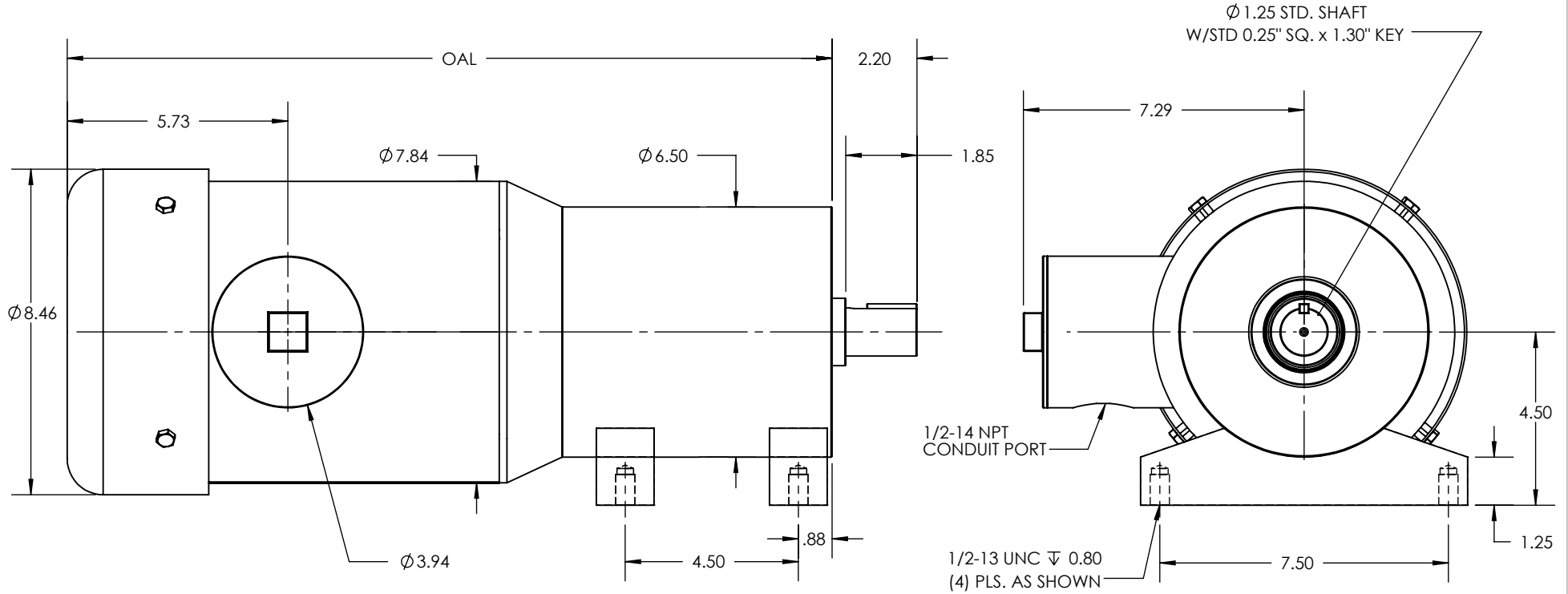
DRAWN: WJK
CHECK:
ENG: JO
DATE: 1/28/2019

IL650 FRAME
FOOT MOUNT
TENV, BLIND FOOT
SANIFAN

NOTES:

OAL DIMENSION		
RATIO	OUTPUT RPM	3 HP
3	580	19.88"
3.67	474	
4.2	414	
5	348	20.87"
9	193	

REVISIONS			
REV.	DESCRIPTION	BY	DATE



1. OTHER SHAFT SIZES AVAILABLE
2. GREASE OR OIL LUBRICATION AVAILABLE
3. OTHER RATIOS AVAILABLE UPON REQUEST

THIS DRAWING CONTAINS INFORMATION WHICH IS PROPRIETARY AND CONFIDENTIAL TO STAINLESS MOTORS, INC., AND IS TRANSMITTED IN CONFIDENCE. THE REPRODUCTION, USE OR DISCLOSURE, IN WHOLE OR IN PART, OF THE DESIGN CONTAINED HEREIN TO OTHERS IS PROHIBITED WITHOUT THE WRITTEN CONSENT OF STAINLESS MOTORS, INC.

© COPYRIGHT STAINLESS MOTORS, INC. ALL RIGHTS RESERVED. YEAR OF COPYRIGHT IS FIRST YEAR INDICATED ON THE DRAWING.

DO NOT SCALE DRAWING

UNLESS OTHERWISE SPECIFIED

DIMENSIONS ARE IN INCHES
DIMENSIONS AND SURFACE TEXTURE DESIGNATIONS APPLY PRIOR TO FINISH

ALL OUTSIDE RADII TO BE .025/.035
ALL INSIDE RADII TO BE .032

REFERENCE

DRAWING: F:\Website\GEARBOXES\IL650XXXBBXXX-180 NUMBER:

MATERIAL: T304 EXTERIOR 17-4 H1150 SHAFT

FINISH: #4 LINE

GENERAL TOLERANCES:

.X = +/- 0.015
.XX = +/- 0.010
.XXX = +/- 0.005

FRACTIONAL = +/- 1/64
ANGULAR = +/- 1/2°

STAINLESS MOTORS INC.

DRAWN: WJK

CHECK:

ENG: JO

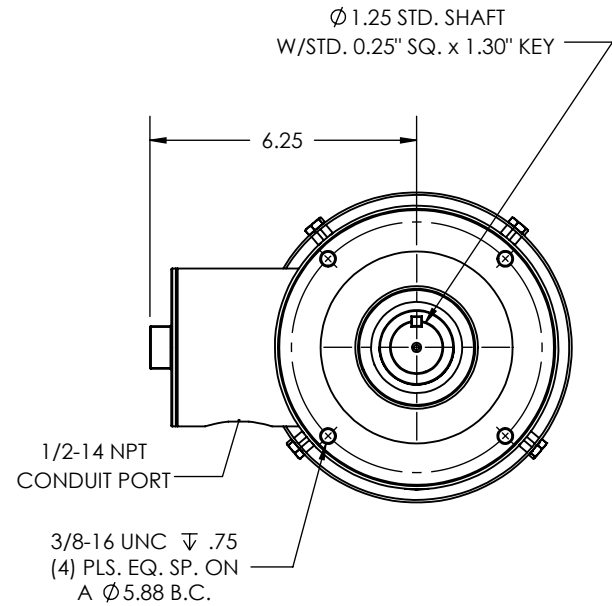
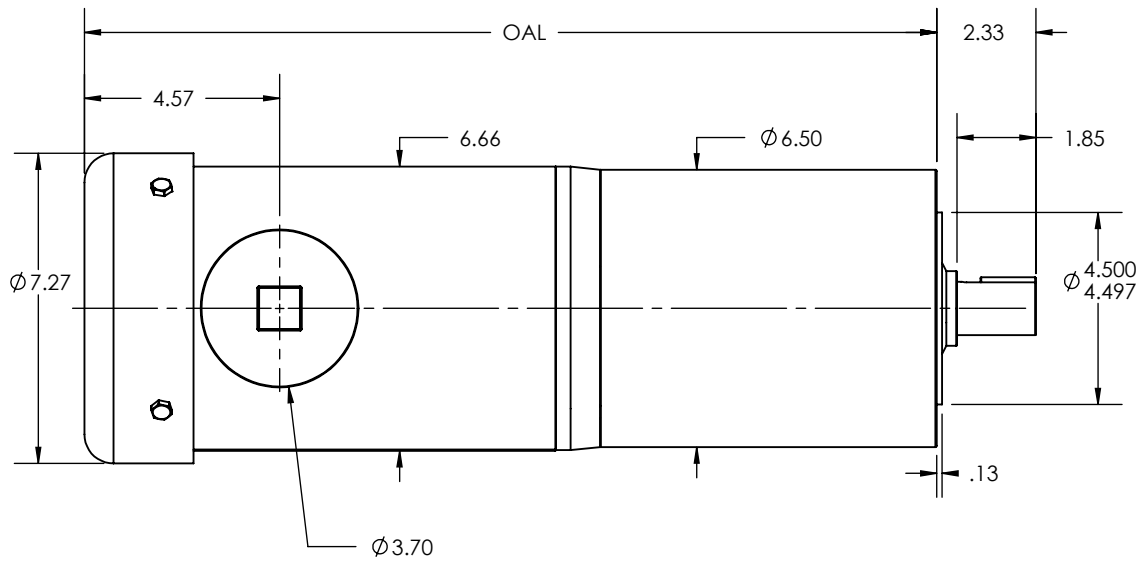
DATE: 1/28/2019

IL650 FRAME
FOOT MOUNT
TEFC, BLIND FOOT
SANIFAN

NOTES:

OAL DIMENSION						
RATIO	OUTPUT RPM	0.25-0.5 HP	0.75 HP	1 HP	1.5 HP	2 HP
3	580	16.98"	17.98"	18.48"	19.48"	19.48"
3.67	474					
4.2	414					
5	348					
9	193	17.97"	18.97"	19.47"	20.47"	20.47"
12.6	138					
15	116					
17.6	98				---	---
21	82				---	---
25	69				---	---

REVISIONS			
REV.	DESCRIPTION	BY	DATE



- OTHER SHAFT SIZES AVAILABLE
- GREASE OR OIL LUBRICATION AVAILABLE
- OTHER RATIOS AVAILABLE UPON REQUEST

THIS DRAWING CONTAINS INFORMATION WHICH IS PROPRIETARY AND CONFIDENTIAL TO STAINLESS MOTORS, INC., AND IS TRANSMITTED IN CONFIDENCE. THE REPRODUCTION, USE OR DISCLOSURE, IN WHOLE OR IN PART, OF THE DESIGN CONTAINED HEREIN TO OTHERS IS PROHIBITED WITHOUT THE WRITTEN CONSENT OF STAINLESS MOTORS, INC.

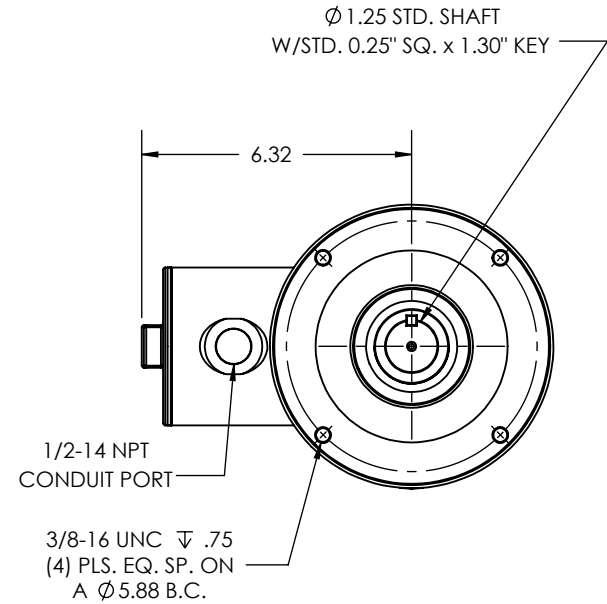
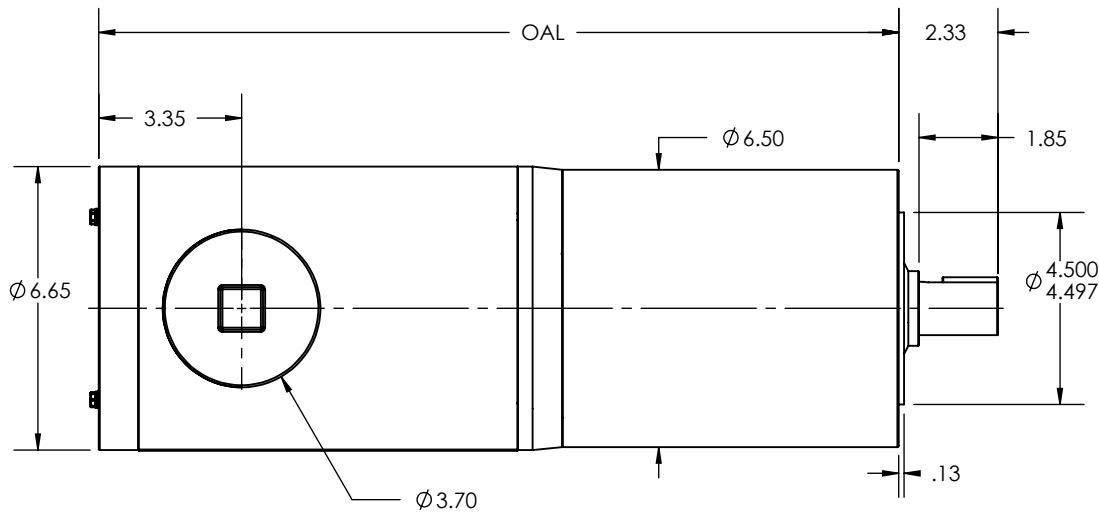
© COPYRIGHT STAINLESS MOTORS, INC. ALL RIGHTS RESERVED. YEAR OF COPYRIGHT IS FIRST YEAR INDICATED ON THE DRAWING.

DO NOT SCALE DRAWING	MATERIAL: T304 EXTERIOR 17-4 H1150 SHAFT	STAINLESS MOTORS INC.
UNLESS OTHERWISE SPECIFIED	FINISH: #4 LINE	
DIMENSIONS ARE IN INCHES DIMENSIONS AND SURFACE TEXTURE DESIGNATIONS APPLY PRIOR TO FINISH	GENERAL TOLERANCES: .X = +/- 0.015 .XX = +/- 0.010 .XXX = +/- 0.005	DRAWN: WJK
DEBURR AND BREAK ALL SHARP EDGES 0.005 - 0.015	FRACTIONAL = +/- 1/64 ANGULAR = +/- 1/2°	CHECK: JO
REFERENCE DRAWING: F:\Website\GEARBOXES\IL\IL650XXXCBXXXX-56		ENG: JO
		DATE: 1/28/2019
		IL650 FRAME C-FACE MOUNT TEFC, NON FOOTED SANIFAN

NOTES:

OAL DIMENSION						
RATIO	OUTPUT RPM	0.25-0.5 HP	0.75 HP	1 HP	1.5 HP	2 HP
3	580	17.26"	18.26"	18.76"	19.76"	19.76"
3.67	474					
4.2	414					
5	348					
9	193	17.25"	18.25"	18.75"	19.75"	19.75"
12.6	138					
15	116					
17.6	98					
21	82					
25	69					

REVISIONS			
REV.	DESCRIPTION	BY	DATE



- OTHER SHAFT SIZES AVAILABLE
- GREASE OR OIL LUBRICATION AVAILABLE
- OTHER RATIOS AVAILABLE UPON REQUEST

THIS DRAWING CONTAINS INFORMATION WHICH IS PROPRIETARY AND CONFIDENTIAL TO STAINLESS MOTORS, INC., AND IS TRANSMITTED IN CONFIDENCE. THE REPRODUCTION, USE OR DISCLOSURE, IN WHOLE OR IN PART, OF THE DESIGN CONTAINED HEREIN TO OTHERS IS PROHIBITED WITHOUT THE WRITTEN CONSENT OF STAINLESS MOTORS, INC.

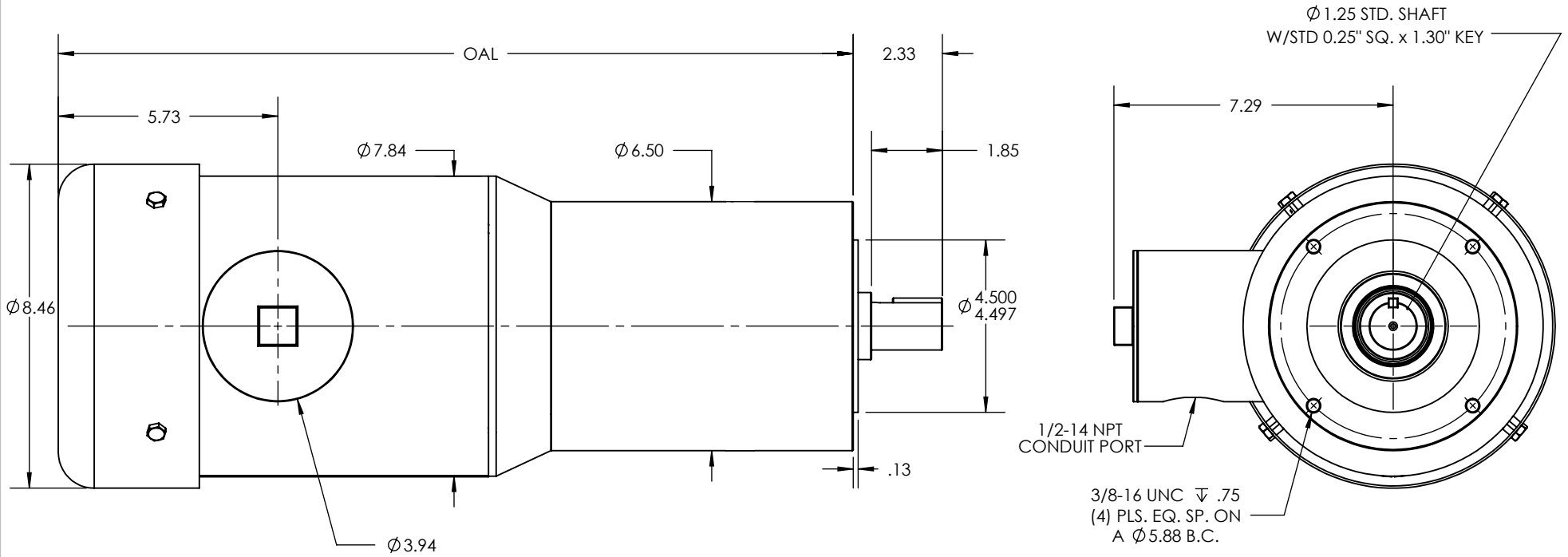
© COPYRIGHT STAINLESS MOTORS, INC. ALL RIGHTS RESERVED. YEAR OF COPYRIGHT IS FIRST YEAR INDICATED ON THE DRAWING.

DO NOT SCALE DRAWING	MATERIAL: T304 EXTERIOR 17-4 H1150 SHAFT	STAINLESS MOTORS INC.
UNLESS OTHERWISE SPECIFIED	FINISH: #4 LINE	
DIMENSIONS ARE IN INCHES DIMENSIONS AND SURFACE TEXTURE DESIGNATIONS APPLY PRIOR TO FINISH	GENERAL TOLERANCES: .X = +/- 0.015 .XX = +/- 0.010 .XXX = +/- 0.005	DRAWN: WJK
DEBURR AND BREAK ALL SHARP EDGES 0.005 - 0.015	FRACTIONAL = +/- 1/64 ANGULAR = +/- 1/2°	CHECK: JO
REFERENCE DRAWING: F:\Website\GEARBOXES\IL\IL650XXXCBXXXX-56-TENV		ENG: JO
		DATE: 1/28/2019
		IL650 FRAME C-FACE MOUNT TENV, NON FOOTED SANIFAN

NOTES:

OAL DIMENSION		
RATIO	OUTPUT RPM	3 HP
3	580	20.75"
3.67	474	
4.2	414	
5	348	
9	193	21.74"

REVISIONS			
REV.	DESCRIPTION	BY	DATE



1. OTHER SHAFT SIZES AVAILABLE
2. GREASE OR OIL LUBRICATION AVAILABLE
3. OTHER RATIOS AVAILABLE UPON REQUEST

THIS DRAWING CONTAINS INFORMATION WHICH IS PROPRIETARY AND CONFIDENTIAL TO STAINLESS MOTORS, INC., AND IS TRANSMITTED IN CONFIDENCE. THE REPRODUCTION, USE OR DISCLOSURE, IN WHOLE OR IN PART, OF THE DESIGN CONTAINED HEREIN TO OTHERS IS PROHIBITED WITHOUT THE WRITTEN CONSENT OF STAINLESS MOTORS, INC.

© COPYRIGHT STAINLESS MOTORS, INC. ALL RIGHTS RESERVED. YEAR OF COPYRIGHT IS FIRST YEAR INDICATED ON THE DRAWING.

DO NOT SCALE DRAWING

UNLESS OTHERWISE SPECIFIED

DIMENSIONS ARE IN INCHES
DIMENSIONS AND SURFACE TEXTURE DESIGNATIONS APPLY PRIOR TO FINISH

ALL OUTSIDE RADII TO BE .025/.035
ALL INSIDE RADII TO BE .032

REFERENCE DRAWING:

DRAWING F:\Website\GEARBOXES\IL650XXCBXXXX-180 NUMBER:

MATERIAL: T304 EXTERIOR 17-4 H1150 SHAFT

FINISH: #4 LINE

GENERAL TOLERANCES:

.X = +/-0.015
.XX = +/-0.010
.XXX = +/-0.005

FRACTIONAL = +/- 1/64
ANGULAR = +/- 1/2°

STAINLESS MOTORS INC.

DRAWN: WJK

CHECK:

ENG: JO

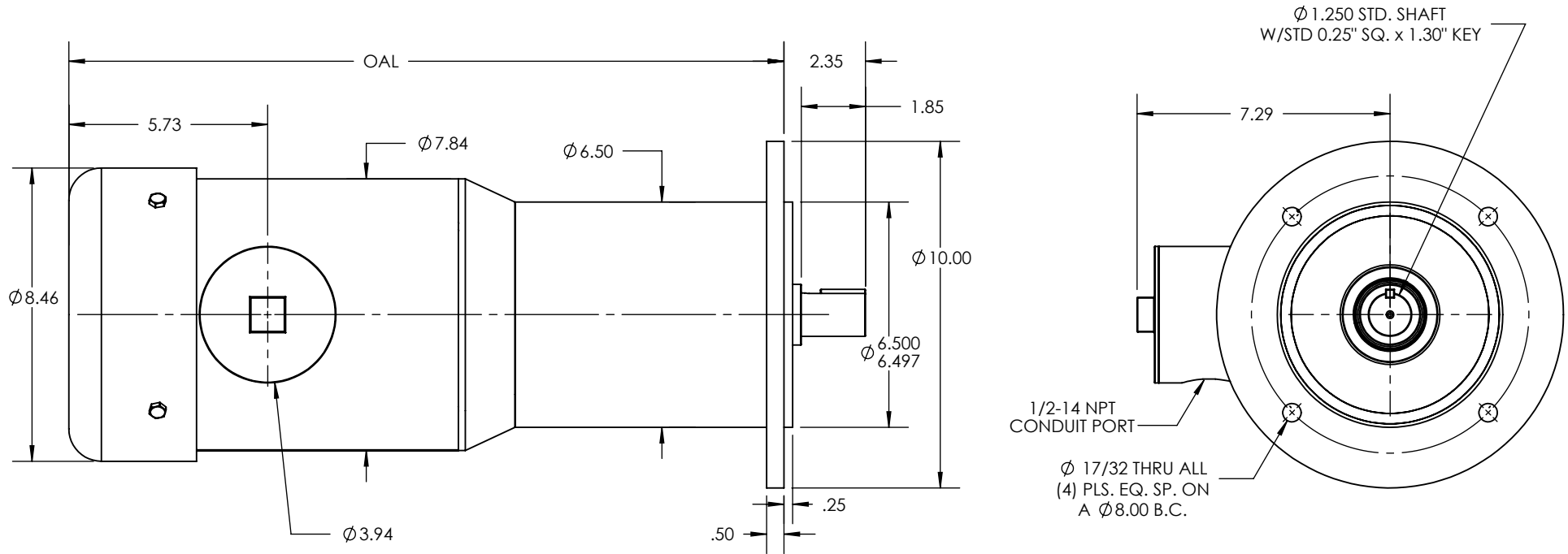
DATE: 1/28/2019

IL650 FRAME
C-FACE MOUNT
TEFC, NON FOOTED
SANIFAN

NOTES:

OAL DIMENSION		
RATIO	OUTPUT RPM	3 HP
3	580	19.63"
3.67	474	
4.2	414	
5	348	20.62"
9	193	

REVISIONS			
REV.	DESCRIPTION	BY	DATE



1. OTHER SHAFT SIZES AVAILABLE
2. GREASE OR OIL LUBRICATION AVAILABLE
3. OTHER RATIOS AVAILABLE UPON REQUEST

THIS DRAWING CONTAINS INFORMATION WHICH IS PROPRIETARY AND CONFIDENTIAL TO STAINLESS MOTORS, INC., AND IS TRANSMITTED IN CONFIDENCE. THE REPRODUCTION, USE OR DISCLOSURE, IN WHOLE OR IN PART, OF THE DESIGN CONTAINED HEREIN TO OTHERS IS PROHIBITED WITHOUT THE WRITTEN CONSENT OF STAINLESS MOTORS, INC.

© COPYRIGHT STAINLESS MOTORS, INC. ALL RIGHTS RESERVED. YEAR OF COPYRIGHT IS FIRST YEAR INDICATED ON THE DRAWING.

DO NOT SCALE DRAWING

UNLESS OTHERWISE SPECIFIED

DIMENSIONS ARE IN INCHES
DIMENSIONS AND SURFACE TEXTURE DESIGNATIONS APPLY PRIOR TO FINISH

ALL OUTSIDE RADII TO BE .025/.035
ALL INSIDE RADII TO BE .032

REFERENCE

DRAWING: F:\Website\GEARBOXES\IL650XXXNXXXX-180 NUMBER:

MATERIAL: T304 EXTERIOR 17-4 H1150 SHAFT

FINISH: #4 LINE

GENERAL TOLERANCES:

.X = +/-0.015
.XX = +/-0.010
.XXX = +/-0.005

FRACTIONAL = +/- 1/64
ANGULAR = +/- 1/2°

STAINLESS MOTORS INC.

DRAWN: WJK

CHECK:

ENG: JO

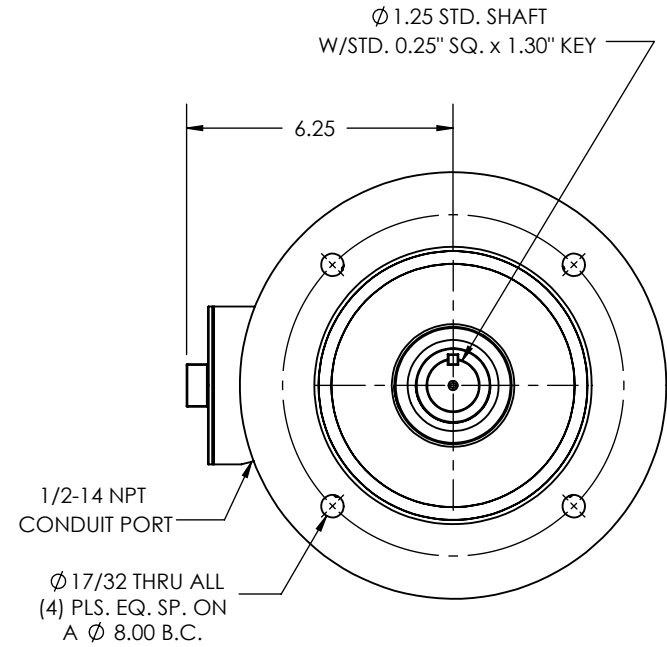
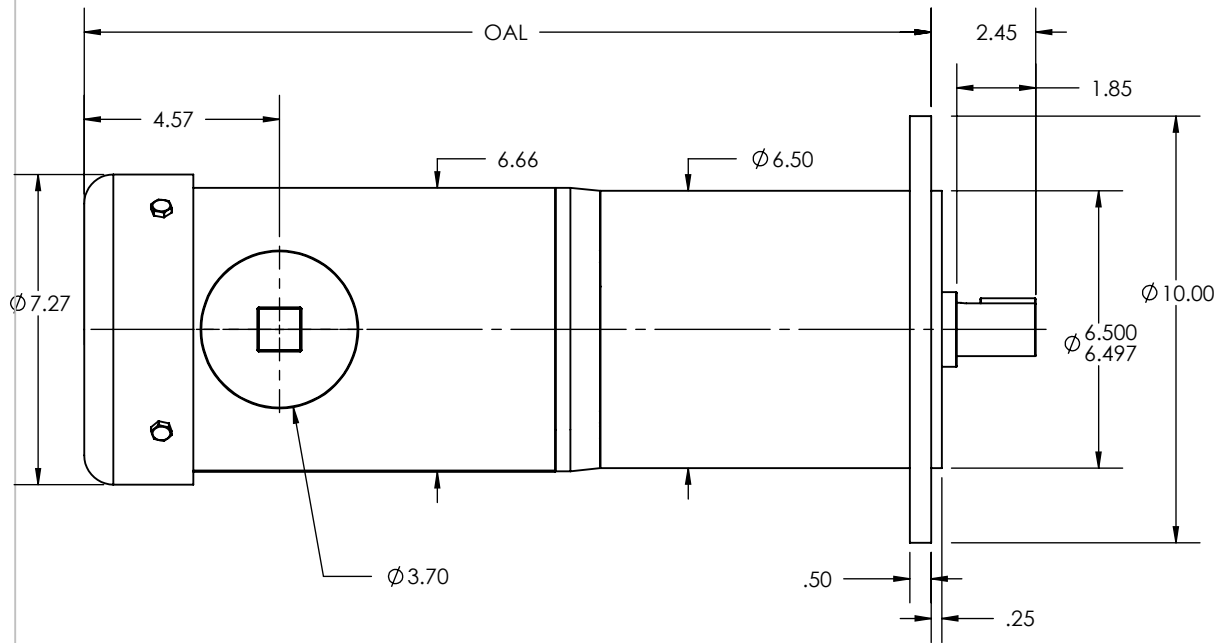
DATE: 1/28/2019

IL650 FRAME
D-FLANGE MOUNT
TEFC, NON FOOTED
SANIFAN

NOTES:

OAL DIMENSION						
RATIO	OUTPUT RPM	0.25-0.5 HP	0.75 HP	1 HP	1.5 HP	2 HP
3	580	16.86"	17.86"	18.36"	19.36"	19.36"
3.67	474					
4.2	414					
5	348					
9	193	17.85"	18.85"	19.35"	20.35"	20.35"
12.6	138					
15	116					
17.6	98					
21	82					
25	69				---	---

REVISIONS			
REV.	DESCRIPTION	BY	DATE



- OTHER SHAFT SIZES AVAILABLE
- GREASE OR OIL LUBRICATION AVAILABLE
- OTHER RATIOS AVAILABLE UPON REQUEST

THIS DRAWING CONTAINS INFORMATION WHICH IS PROPRIETARY AND CONFIDENTIAL TO STAINLESS MOTORS, INC., AND IS TRANSMITTED IN CONFIDENCE. THE REPRODUCTION, USE OR DISCLOSURE, IN WHOLE OR IN PART, OF THE DESIGN CONTAINED HEREIN TO OTHERS IS PROHIBITED WITHOUT THE WRITTEN CONSENT OF STAINLESS MOTORS, INC.

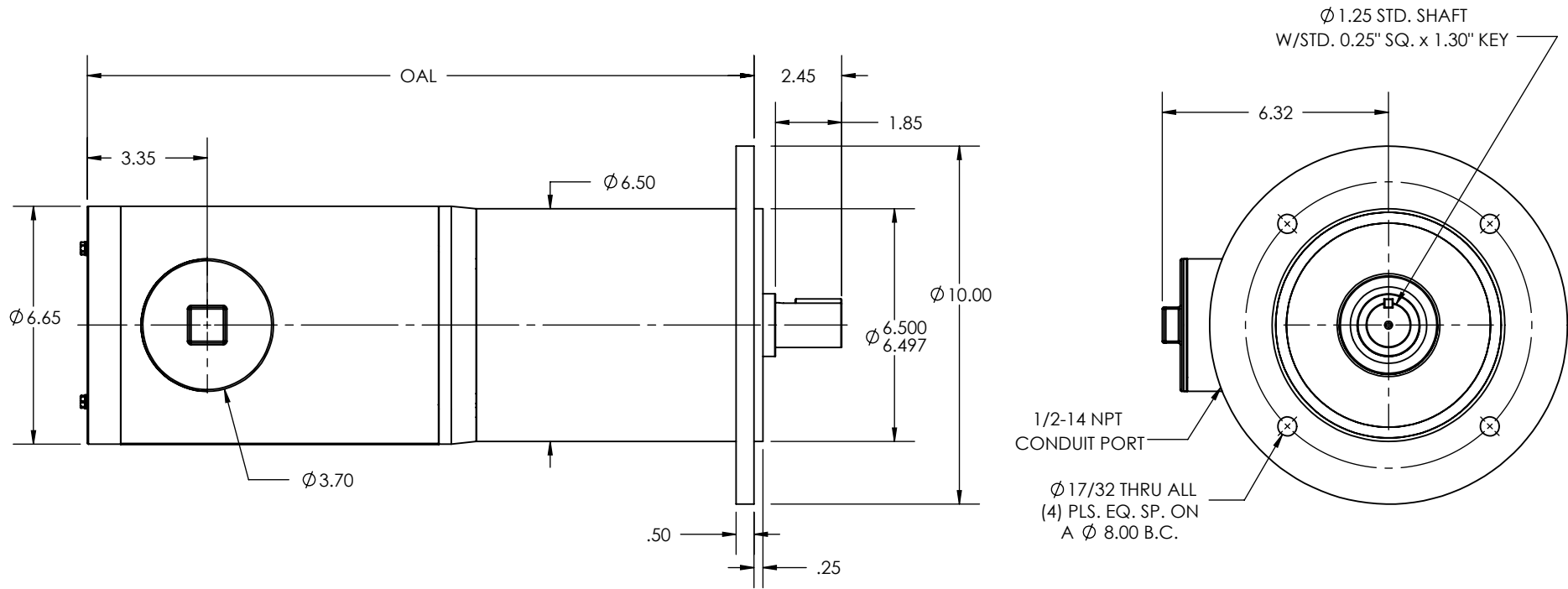
© COPYRIGHT STAINLESS MOTORS, INC. ALL RIGHTS RESERVED. YEAR OF COPYRIGHT IS FIRST YEAR INDICATED ON THE DRAWING.

DO NOT SCALE DRAWING	MATERIAL: T304 EXTERIOR 17-4 H1150 SHAFT	STAINLESS MOTORS INC.
UNLESS OTHERWISE SPECIFIED	FINISH: #4 LINE	
DIMENSIONS ARE IN INCHES DIMENSIONS AND SURFACE TEXTURE DESIGNATIONS APPLY PRIOR TO FINISH	GENERAL TOLERANCES: .X = +/-0.015 .XX = +/-0.010 .XXX = +/-0.005	DRAWN: WJK
DEBURR AND BREAK ALL SHARP EDGES 0.005 - 0.015	FRACTIONAL = +/- 1/64 ANGULAR = +/- 1/2°	CHECK: JO
REFERENCE DRAWING: F:\Website\GEARBOXES\IL\IL650XXX\XXXXOXX-56		DATE: 1/28/2019
		IL650 FRAME D-FLANGE MOUNT TEFC, NON FOOTED SANIFAN

NOTES:

OAL DIMENSION						
RATIO	OUTPUT RPM	0.25-0.5 HP	0.75 HP	1 HP	1.5 HP	2 HP
3	580	17.14"	18.14"	18.64"	19.64"	19.64"
3.67	474					
4.2	414					
5	348					
9	193	17.13"	18.13"	18.63"	19.63"	19.63"
12.6	138					
15	116					
17.6	98					
21	82					
25	69					

REVISIONS			
REV.	DESCRIPTION	BY	DATE



1. OTHER SHAFT SIZES AVAILABLE
2. GREASE OR OIL LUBRICATION AVAILABLE
3. OTHER RATIOS AVAILABLE UPON REQUEST

THIS DRAWING CONTAINS INFORMATION WHICH IS PROPRIETARY AND CONFIDENTIAL TO STAINLESS MOTORS, INC., AND IS TRANSMITTED IN CONFIDENCE. THE REPRODUCTION, USE OR DISCLOSURE, IN WHOLE OR IN PART, OF THE DESIGN CONTAINED HEREIN TO OTHERS IS PROHIBITED WITHOUT THE WRITTEN CONSENT OF STAINLESS MOTORS, INC.

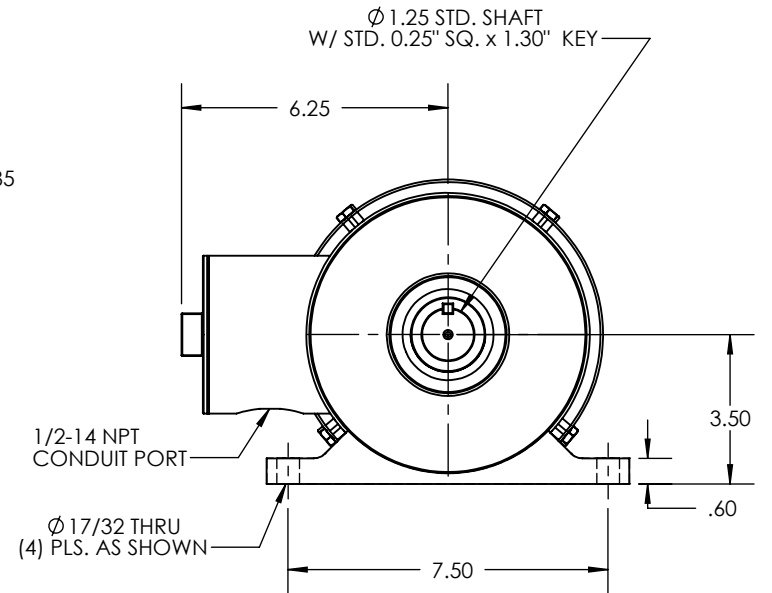
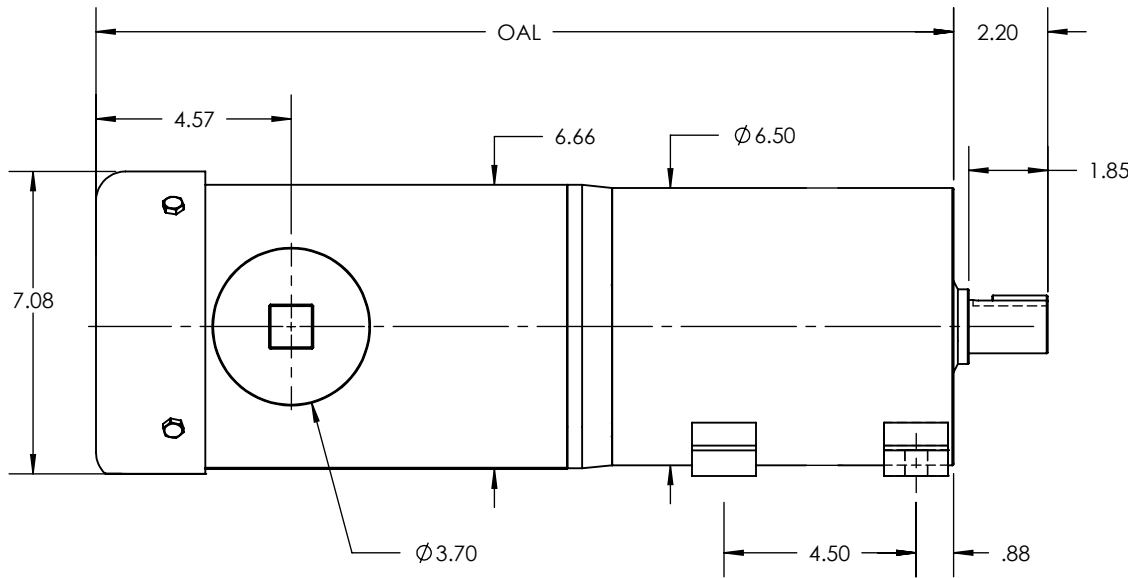
© COPYRIGHT STAINLESS MOTORS, INC. ALL RIGHTS RESERVED. YEAR OF COPYRIGHT IS FIRST YEAR INDICATED ON THE DRAWING.

DO NOT SCALE DRAWING	MATERIAL: T304 EXTERIOR 17-4 H1150 SHAFT	STAINLESS MOTORS INC.
UNLESS OTHERWISE SPECIFIED	FINISH: #4 LINE	
DIMENSIONS ARE IN INCHES DIMENSIONS AND SURFACE TEXTURE DESIGNATIONS APPLY PRIOR TO FINISH	GENERAL TOLERANCES: .X = +/- 0.015 .XX = +/- 0.010 .XXX = +/- 0.005	DRAWN: WJK
DEBURR AND BREAK ALL SHARP EDGES 0.005 - 0.015	FRACTIONAL = +/- 1/64 ANGULAR = +/- 1/2°	CHECK: JO
REFERENCE DRAWING: F:\Website\GEARBOXES\IL\IL650XXXNXXXXXX-56-TENV		DATE: 1/28/2019
		IL650 FRAME D-FLANGE MOUNT TENV, NON FOOTED SANIFAN

NOTES:

OAL DIMENSION						
RATIO	OUTPUT RPM	0.25-0.5 HP	0.75 HP	1 HP	1.5 HP	2 HP
3	580	17.11"	18.11"	18.61"	19.61"	19.61"
3.67	474					
4.2	414					
5	348					
9	193	18.10"	19.10"	19.60"	20.60"	20.60"
12.6	138					
15	116					
17.6	98					
21	82					
25	69					

REVISIONS			
REV.	DESCRIPTION	BY	DATE



1. OTHER SHAFT SIZES AVAILABLE
2. GREASE OR OIL LUBRICATION AVAILABLE
3. OTHER RATIOS AVAILABLE UPON REQUEST

THIS DRAWING CONTAINS INFORMATION WHICH IS PROPRIETARY AND CONFIDENTIAL TO STAINLESS MOTORS, INC., AND IS TRANSMITTED IN CONFIDENCE. THE REPRODUCTION, USE OR DISCLOSURE, IN WHOLE OR IN PART, OF THE DESIGN CONTAINED HEREIN TO OTHERS IS PROHIBITED WITHOUT THE WRITTEN CONSENT OF STAINLESS MOTORS, INC.

© COPYRIGHT STAINLESS MOTORS, INC. ALL RIGHTS RESERVED. YEAR OF COPYRIGHT IS FIRST YEAR INDICATED ON THE DRAWING.

DO NOT SCALE DRAWING

UNLESS OTHERWISE SPECIFIED

DIMENSIONS ARE IN INCHES
DIMENSIONS AND SURFACE TEXTURE DESIGNATIONS APPLY PRIOR TO FINISH

DEBURR AND BREAK ALL SHARP EDGES 0.005 - 0.015

MATERIAL: T304 EXTERIOR
17-4 H1150 SHAFT

FINISH:
#4 LINE

GENERAL TOLERANCES:

.X = +/- 0.015
.XX = +/- 0.010
.XXX = +/- 0.005

FRACTIONAL = +/- 1/64
ANGULAR = +/- 1/2°

REFERENCE DRAWING:

DRAWING F:\Website\GEARBOXES\IL\IL650XXXTA\XXXX-56
NUMBER:

**STAINLESS
MOTORS INC.**

DRAWN: WJK

CHECK:

ENG: JO

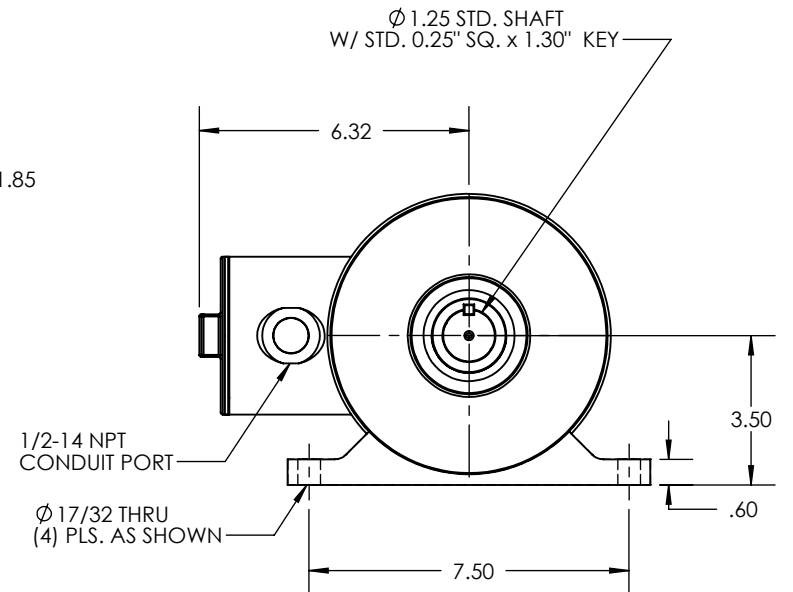
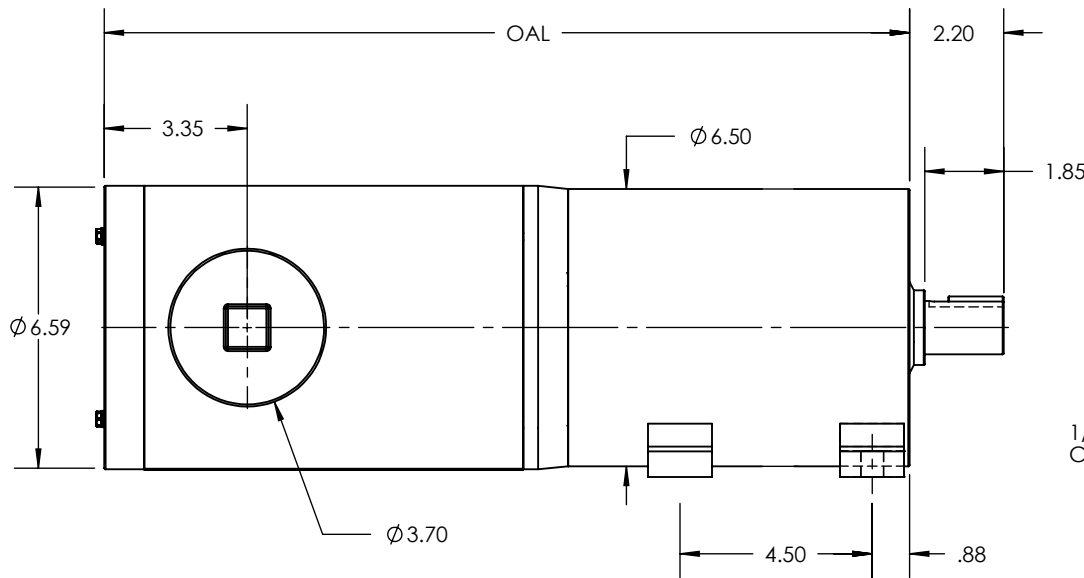
DATE: 1/28/2019

IL650 FRAME
FOOT MOUNT
TEFC, THRU FOOT
SANIFAN

NOTES:

OAL DIMENSION						
RATIO	OUTPUT RPM	0.25-0.5 HP	0.75 HP	1 HP	1.5 HP	2 HP
3	580	16.39"	17.39"	17.89"	18.89"	18.89"
3.67	474					
4.2	414					
5	348					
9	193					
12.6	138	17.38"	18.38"	18.88"	19.88"	19.88"
15	116					
17.6	98					
21	82					
25	69					

REVISIONS			
REV.	DESCRIPTION	BY	DATE



1. OTHER SHAFT SIZES AVAILABLE
2. GREASE OR OIL LUBRICATION AVAILABLE
3. OTHER RATIOS AVAILABLE UPON REQUEST

THIS DRAWING CONTAINS INFORMATION WHICH IS PROPRIETARY AND CONFIDENTIAL TO STAINLESS MOTORS, INC., AND IS TRANSMITTED IN CONFIDENCE. THE REPRODUCTION, USE OR DISCLOSURE, IN WHOLE OR IN PART, OF THE DESIGN CONTAINED HEREIN TO OTHERS IS PROHIBITED WITHOUT THE WRITTEN CONSENT OF STAINLESS MOTORS, INC.

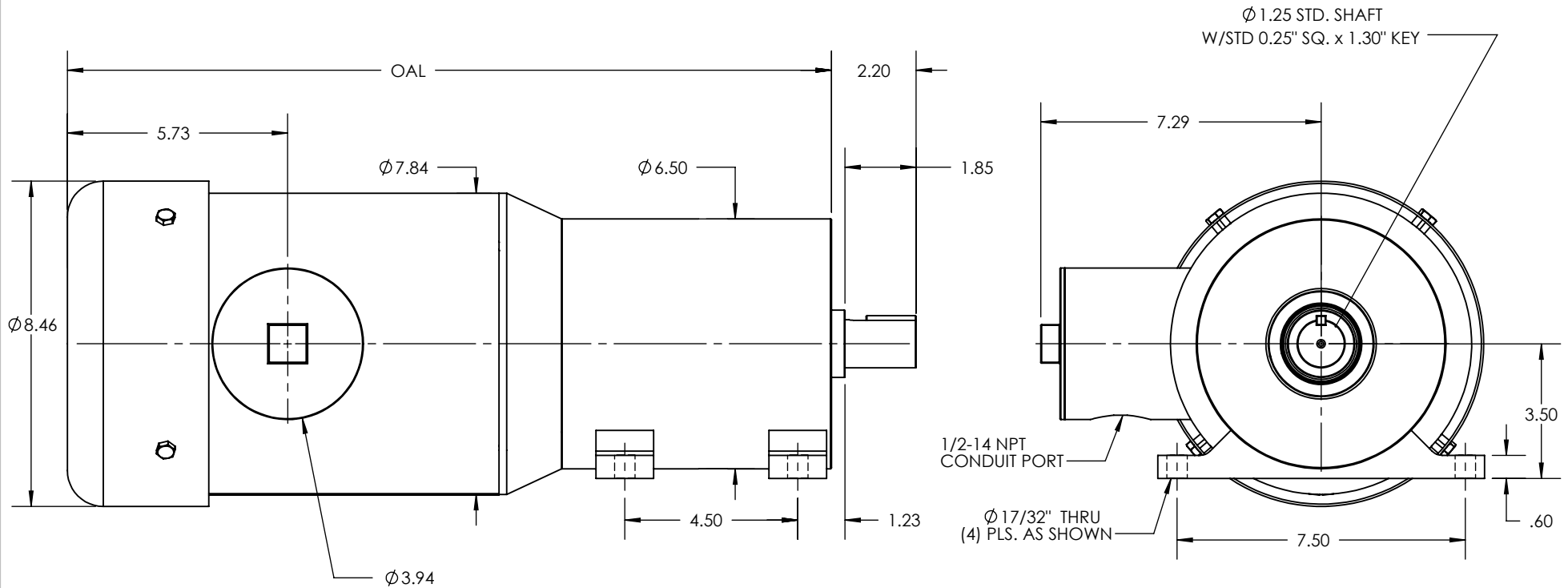
© COPYRIGHT STAINLESS MOTORS, INC. ALL RIGHTS RESERVED. YEAR OF COPYRIGHT IS FIRST YEAR INDICATED ON THE DRAWING.

DO NOT SCALE DRAWING	MATERIAL: T304 EXTERIOR 17-4 H1150 SHAFT	STAINLESS MOTORS INC.
UNLESS OTHERWISE SPECIFIED	FINISH: #4 LINE	
DIMENSIONS ARE IN INCHES DIMENSIONS AND SURFACE TEXTURE DESIGNATIONS APPLY PRIOR TO FINISH	GENERAL TOLERANCES: .X = +/- 0.015 .XX = +/- 0.010 .XXX = +/- 0.005	DRAWN: WJK CHECK: ENG: JO DATE: 1/28/2019
DEBURR AND BREAK ALL SHARP EDGES 0.005 - 0.015	FRACTIONAL = +/- 1/64 ANGULAR = +/- 1/2°	IL650 FRAME FOOT MOUNT TENV, THRU FOOT SANIFAN
REFERENCE DRAWING: DRAWING F:\Website\GEARBOXES\IL\IL650XXXTA\XXXX-56-TENV NUMBER:		

NOTES:

OAL DIMENSION		
RATIO	OUTPUT RPM	3 HP
3	580	19.88"
3.67	474	
4.2	414	
5	348	20.87"
9	193	

REVISIONS			
REV.	DESCRIPTION	BY	DATE



1. OTHER SHAFT SIZES AVAILABLE
2. GREASE OR OIL LUBRICATION AVAILABLE
3. OTHER RATIOS AVAILABLE UPON REQUEST

THIS DRAWING CONTAINS INFORMATION WHICH IS PROPRIETARY AND CONFIDENTIAL TO STAINLESS MOTORS, INC., AND IS TRANSMITTED IN CONFIDENCE. THE REPRODUCTION, USE OR DISCLOSURE, IN WHOLE OR IN PART, OF THE DESIGN CONTAINED HEREIN TO OTHERS IS PROHIBITED WITHOUT THE WRITTEN CONSENT OF STAINLESS MOTORS, INC.

© COPYRIGHT STAINLESS MOTORS, INC. ALL RIGHTS RESERVED. YEAR OF COPYRIGHT IS FIRST YEAR INDICATED ON THE DRAWING.

DO NOT SCALE DRAWING

UNLESS OTHERWISE SPECIFIED

DIMENSIONS ARE IN INCHES
DIMENSIONS AND SURFACE TEXTURE DESIGNATIONS APPLY PRIOR TO FINISH

ALL OUTSIDE RADII TO BE .025/.035
ALL INSIDE RADII TO BE .032

REFERENCE DRAWING:
DRAWING F:\Website\GEARBOXES\IL650XXXTA\XXXX-180 NUMBER:

MATERIAL: 1304 EXTERIOR 17-4 H1150 SHAFT

FINISH: #4 LINE

GENERAL TOLERANCES:

.X = +/-0.015
.XX = +/-0.010
.XXX = +/-0.005

FRACTIONAL = +/- 1/64
ANGULAR = +/- 1/2°

STAINLESS MOTORS INC.

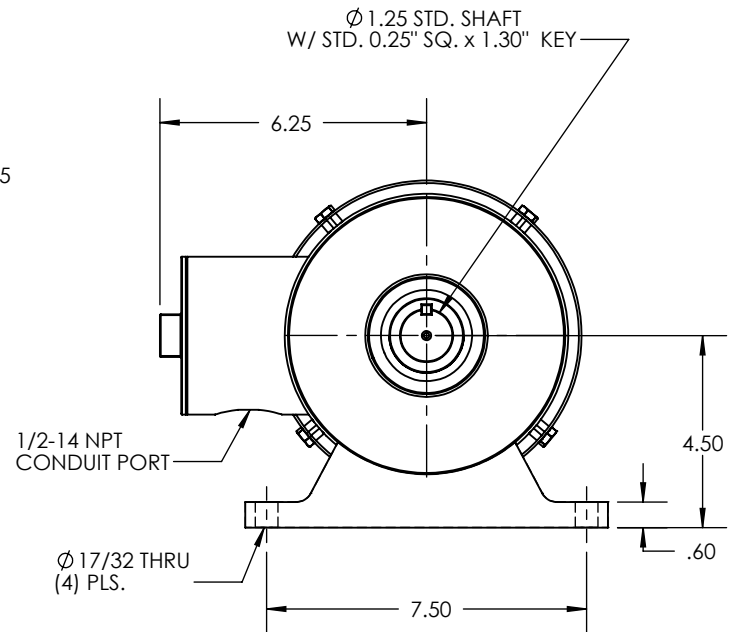
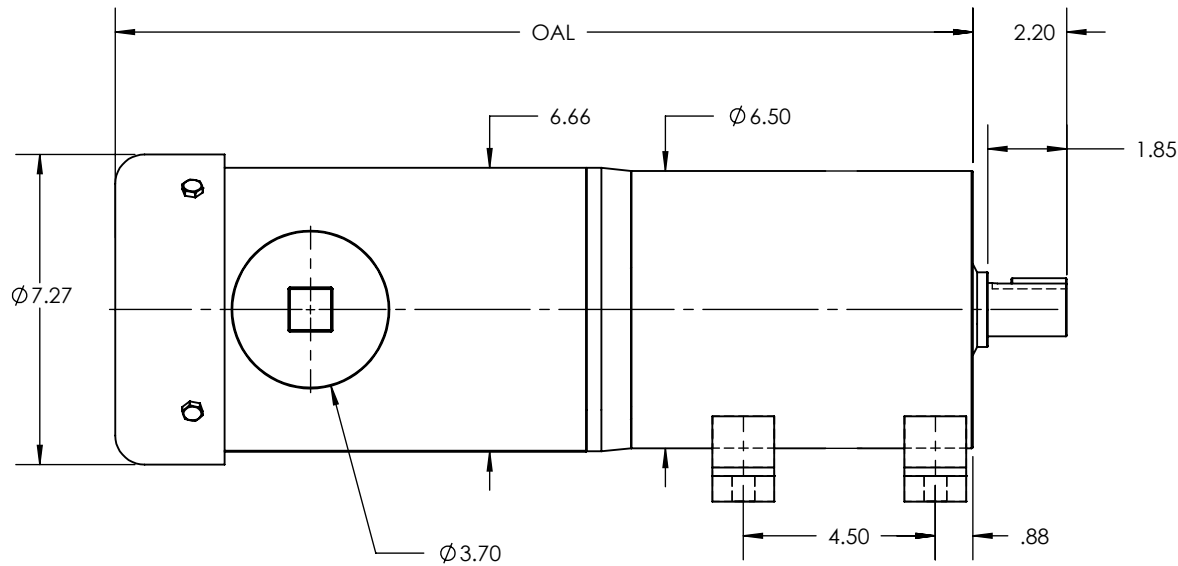
DRAWN: WJK
CHECK:
ENG: JO
DATE: 1/28/2019

IL650 FRAME
FOOT MOUNT
TEFC, THRU FOOT
SANIFAN

NOTES:

OAL DIMENSION						
RATIO	OUTPUT RPM	0.25-0.5 HP	0.75 HP	1 HP	1.5 HP	2 HP
3	580	17.11"	18.11"	18.61"	19.61"	19.61"
3.67	474					
4.2	414					
5	348					
9	193	18.10"	19.10"	19.60"	20.60"	20.60"
12.6	138					
15	116					
17.6	98					
21	82					
25	69					

REVISIONS			
REV.	DESCRIPTION	BY	DATE



1. OTHER SHAFT SIZES AVAILABLE
2. GREASE OR OIL LUBRICATION AVAILABLE
3. OTHER RATIOS AVAILABLE UPON REQUEST

THIS DRAWING CONTAINS INFORMATION WHICH IS PROPRIETARY AND CONFIDENTIAL TO STAINLESS MOTORS, INC., AND IS TRANSMITTED IN CONFIDENCE. THE REPRODUCTION, USE OR DISCLOSURE, IN WHOLE OR IN PART, OF THE DESIGN CONTAINED HEREIN TO OTHERS IS PROHIBITED WITHOUT THE WRITTEN CONSENT OF STAINLESS MOTORS, INC.

© COPYRIGHT STAINLESS MOTORS, INC. ALL RIGHTS RESERVED. YEAR OF COPYRIGHT IS FIRST YEAR INDICATED ON THE DRAWING.

DO NOT SCALE DRAWING

UNLESS OTHERWISE SPECIFIED

DIMENSIONS ARE IN INCHES
DIMENSIONS AND SURFACE TEXTURE DESIGNATIONS APPLY PRIOR TO FINISH

DEBURR AND BREAK ALL SHARP EDGES 0.005 - 0.015

MATERIAL: T304 EXTERIOR
17-4 H1150 SHAFT

FINISH: #4 LINE

GENERAL TOLERANCES:

.X = +/- 0.015
.XX = +/- 0.010
.XXX = +/- 0.005

FRACTIONAL = +/- 1/64
ANGULAR = +/- 1/2°

REFERENCE DRAWING:

DRAWING F:\Website\GEARBOXES\IL\IL650XXXTBXXXX-56 NUMBER:

STAINLESS MOTORS INC.

DRAWN: WJK

CHECK:

ENG: JO

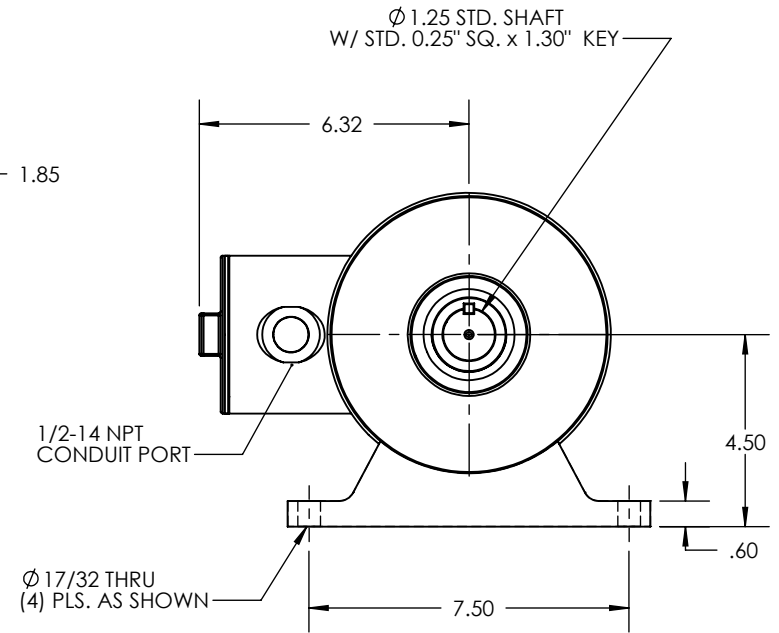
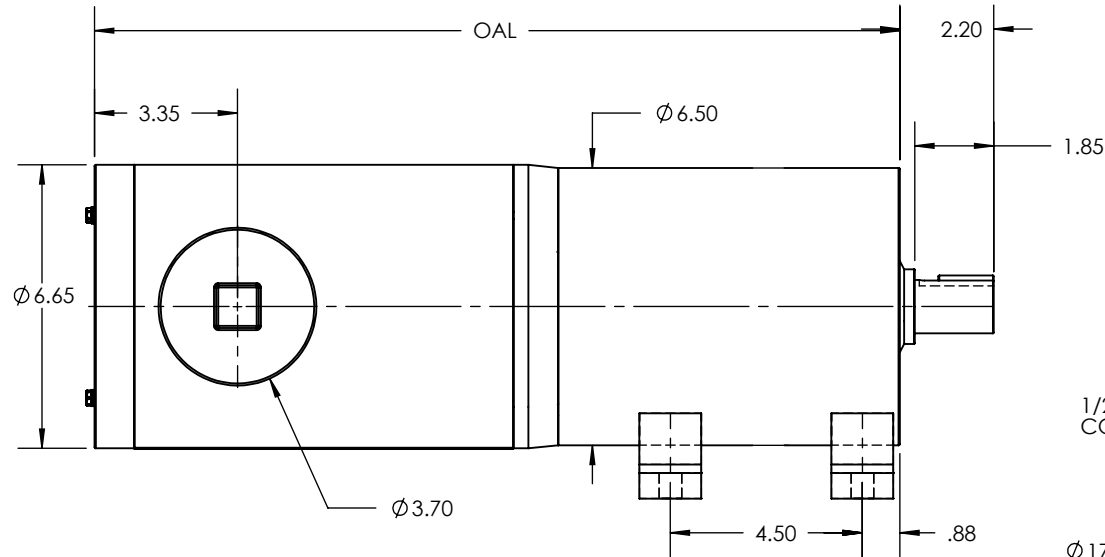
DATE: 1/28/2019

IL650 FRAME
FOOT MOUNT
TEFC, THRU FOOT
SANIFAN

NOTES:

OAL DIMENSION						
RATIO	OUTPUT RPM	0.25-0.5 HP	0.75 HP	1 HP	1.5 HP	2 HP
3	580	16.39"	17.39"	17.89"	18.89"	18.89"
3.67	474					
4.2	414					
5	348					
9	193	17.38"	18.38"	18.88"	19.88"	19.88"
12.6	138					
15	116					
17.6	98					
21	82					
25	69				---	---

REVISIONS			
REV.	DESCRIPTION	BY	DATE



1. OTHER SHAFT SIZES AVAILABLE
2. GREASE OR OIL LUBRICATION AVAILABLE
3. OTHER RATIOS AVAILABLE UPON REQUEST

THIS DRAWING CONTAINS INFORMATION WHICH IS PROPRIETARY AND CONFIDENTIAL TO STAINLESS MOTORS, INC., AND IS TRANSMITTED IN CONFIDENCE. THE REPRODUCTION, USE OR DISCLOSURE, IN WHOLE OR IN PART, OF THE DESIGN CONTAINED HEREIN TO OTHERS IS PROHIBITED WITHOUT THE WRITTEN CONSENT OF STAINLESS MOTORS, INC.

© COPYRIGHT STAINLESS MOTORS, INC. ALL RIGHTS RESERVED. YEAR OF COPYRIGHT IS FIRST YEAR INDICATED ON THE DRAWING.

DO NOT SCALE DRAWING

UNLESS OTHERWISE SPECIFIED

DIMENSIONS ARE IN INCHES
DIMENSIONS AND SURFACE TEXTURE DESIGNATIONS APPLY PRIOR TO FINISH

DEBURR AND BREAK ALL SHARP EDGES 0.005 - 0.015

MATERIAL: T304 EXTERIOR 17-4 H1150 SHAFT

FINISH: #4 LINE

GENERAL TOLERANCES:

.X = +/- 0.015
.XX = +/- 0.010
.XXX = +/- 0.005

FRACTIONAL = +/- 1/64
ANGULAR = +/- 1/2°

STAINLESS MOTORS INC.

DRAWN: WJK

CHECK:

ENG: JO

DATE: 1/28/2019

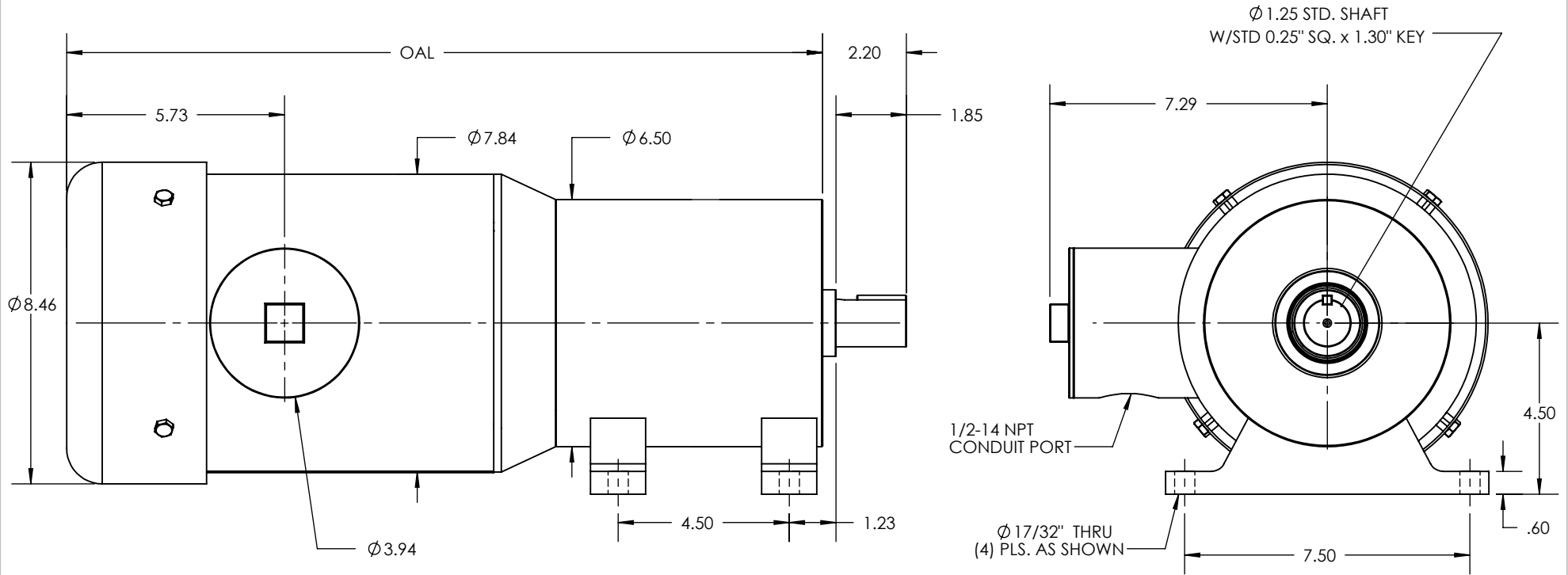
IL650 FRAME
FOOT MOUNT
TENV, THRU FOOT
SANIFAN

REFERENCE DRAWING:
DRAWING F:\Website\GEARBOXES\IL\IL650\XTB\XXXX-56-TENV NUMBER:

NOTES:

OAL DIMENSION		
RATIO	OUTPUT RPM	3 HP
3	580	19.88"
3.67	474	
4.2	414	
5	348	
9	193	20.87"

REVISIONS			
REV.	DESCRIPTION	BY	DATE



1. OTHER SHAFT SIZES AVAILABLE
2. GREASE OR OIL LUBRICATION AVAILABLE
3. OTHER RATIOS AVAILABLE UPON REQUEST

THIS DRAWING CONTAINS INFORMATION WHICH IS PROPRIETARY AND CONFIDENTIAL TO STAINLESS MOTORS, INC., AND IS TRANSMITTED IN CONFIDENCE. THE REPRODUCTION, USE OR DISCLOSURE, IN WHOLE OR IN PART, OF THE DESIGN CONTAINED HEREIN TO OTHERS IS PROHIBITED WITHOUT THE WRITTEN CONSENT OF STAINLESS MOTORS, INC.

© COPYRIGHT STAINLESS MOTORS, INC. ALL RIGHTS RESERVED. YEAR OF COPYRIGHT IS FIRST YEAR INDICATED ON THE DRAWING.

DO NOT SCALE DRAWING

UNLESS OTHERWISE SPECIFIED

DIMENSIONS ARE IN INCHES
DIMENSIONS AND SURFACE TEXTURE DESIGNATIONS APPLY PRIOR TO FINISH

ALL OUTSIDE RADII TO BE .025/.035
ALL INSIDE RADII TO BE .032.

REFERENCE

DRAWING: F:\Website\GEARBOXES\IL650XXTBXXX-180 NUMBER:

MATERIAL: T304 EXTERIOR 17-4 H1150 SHAFT

FINISH: #4 LINE

GENERAL TOLERANCES:

.X = +/-0.015
.XX = +/-0.010
.XXX = +/-0.005

FRACTIONAL = +/- 1/64
ANGULAR = +/- 1/2°

STAINLESS MOTORS INC.

DRAWN: WJK

CHECK: JO

ENG: JO

DATE: 1/28/2019

IL650 FRAME
FOOT MOUNT
TEFC, THRU FOOT
SANIFAN

NOTES: